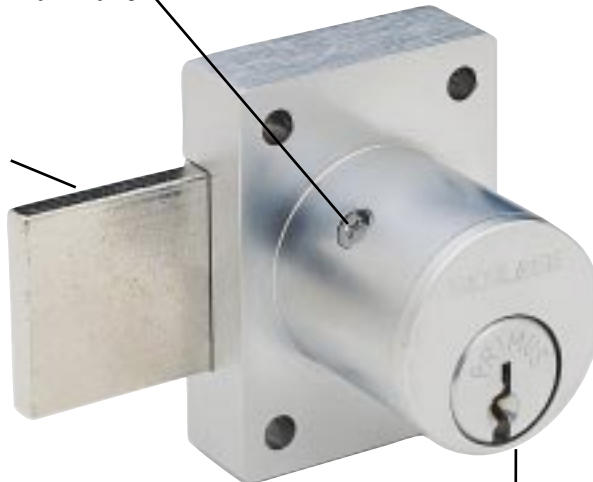


CL-SERIES

Cabinet Locks

Cylinder retaining screw
For quick and easy rekeying.

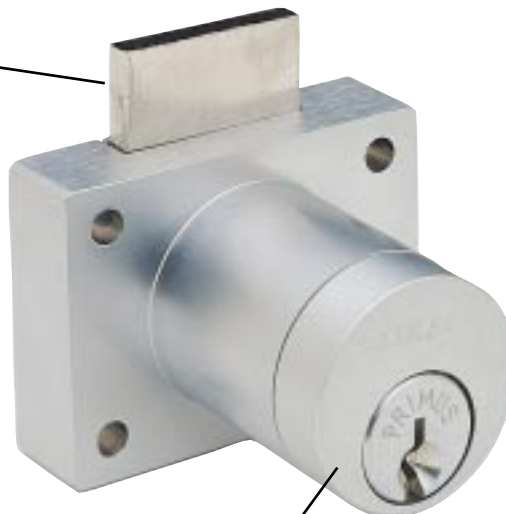
1" (25mm) throw steel deadbolt
For reliable strength.



***CL1000-SERIES
DOOR LOCK***

Schlage solid brass cylinder
For quality and single key convenience.
(keyed 6-pin standard) keyed 5-pin available
Primus® high security cylinder
Available for both door and drawer functions.

3/4" (19mm) throw steel deadbolt
For reliable strength.



***CL2009-SERIES
DRAWER LOCK***

Available in two finishes

CL-SERIES

Cabinet Locks

Schlage CL-Series cabinet locks use full size, high quality Schlage® cylinders. Cabinet locks can be masterkeyed to door hardware providing the convenience of a single-key operation. You may integrate Schlage cabinet locks into any Schlage key system, including both new and existing systems. CL-Series cabinet locks are also quick and easy to rekey.

CL-Series cabinet locks are suitable for either door or drawer applications. Schlage cabinet locks are also available with Primus® high security cylinders for extra security.

Performance Specifications

CL1000-Series, Cabinet Door Lock

Certifications: ANSI A156.11, grade 2

Body: Zinc 1¹/₈" (29mm) diameter housing

Bolt: Steel 1" (25mm) throw

Cylinder: Schlage 6-pin solid brass

Door thickness: 7/8", 1", 1¹/₈", 1³/₈",
(22mm, 25mm, 29mm, 35mm)

Finishes: 605 (bright brass), 626 (satin chrome)

All Schlage keyways available.

Primus® high security cylinders available.

Not available less cylinder.

CL2000-Series, Cabinet Drawer Lock

Certifications: ANSI A156.11, grade 2

Body: Zinc 1¹/₈" (29mm) diameter housing

Bolt: Steel 3/4" (19mm) throw

Cylinder: Schlage 6-pin solid brass

Door thickness: 7/8", 1", 1¹/₈", 1³/₈",
(22mm, 25mm, 29mm, 35mm)

Finishes: 605 (bright brass), 626 (satin chrome)

All Schlage keyways available.

Primus® high security cylinders available.

Not available less cylinder.

The Schlage CL-Series is approved by WIC, the Woodwork Institute of California.

For further information, please contact your Schlage dealer.

SCHLAGE

2315 Briargate Parkway
Colorado Springs, CO 80920
719-264-5300
719-452-0663 Fax
www.schlage.com

An  Ingersoll-Rand business

 **Security & Safety**
Proven Source. Proven Solutions.™