

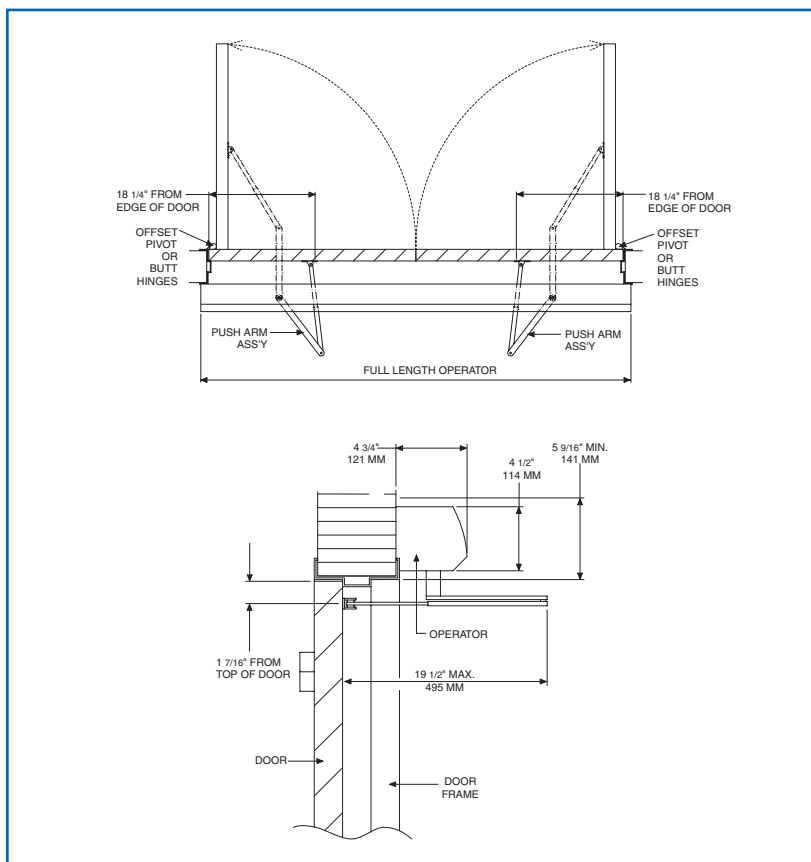


# LCN 9150 SERIES

## MOUNTING DETAILS

### TOP JAMB, INDEPENDENT/SIMULTANEOUS PAIR (OFFSET PIVOT/BUTT HINGE, PUSH) MOUNTING

Determined by wiring method  
during installation.



### MAXIMUM OPENING

Template allows 90 degree power  
opening and 90 degree manual  
opening.

#### Special Templates

Customized installation templates  
or products may be available to  
solve unusual applications.  
Contact LCN for assistance.

- ▶ **Butt Hinges** should not exceed 5" (127 mm) in width.
- ▶ **Auxiliary Stop** is recommended.
- ▶ **Reveal** for push installations should not exceed 6" (152 mm) for REGULAR ARM and 9 3/4" (248 mm) for LONG ARM.
- ▶ **Head Frame** minimum 2" (51 mm).
- ▶ **Top Rail** minimum 2" (51 mm). Flush ceiling installation requires 5 1/4" (133 mm) minimum.
- ▶ **Opening and Closing Time** are variable by adjustments to the electronic control module located on the operator assembly. Maximum hold-open time adjustable up to approximately 30 seconds.
- ▶ **System Diagram** see "POWER OPERATORS" section pages 28-29 for typical system wiring and page 30 for electrical data.
- ▶ Please consult your local SSC representative or LCN for assistance with specific installations and material requirements.

## MOTOR GEARBOX

### **MOTOR GEARBOX ASSEMBLY, 9150-3454S**

Driving mechanism for operator. For 27" unit. Switch included.

### **MOTOR GEARBOX ASSEMBLY (W/O SWITCH), 9150-3454**

Driving mechanism for operator. For full length unit. Switch not included.

## BRACKETS

### **MOUNTING BRACKET, 9150-3018**

Standard mounting bracket.

## CONTROL BOXES

### **CONTROL BOX, STANDARD (120v), 9150-3462**

Electronic controlling device (standard) for Benchmark.

### **CONTROL BOX, PREMIUM (120v), 9150-3462P**

Electronic controlling device (premium) for Benchmark.

## COVERS

### **METAL COVER, 9150-72MC**

Standard, 72", non-handed, extruded aluminum cover.

### **FULL METAL COVER, 9150-72FC**

Full length, non-handed, extruded aluminum cover. Specify length 52" to 98".

### **COVER INSERT 9150-163**

Used to cover operator shaft opening.

### **COVER END CAP INSERT, 9150-163-1**

Used to cover switch hole opening.

### **COVER END CAP, 9150-334**

Black plastic end caps.

## ARMS

### **REGULAR ARM, 9140-3077**

Non-handed arm.

### **LONG ARM, 9140-3077L**

Non-handed long arm.

### **ROD, 9150-79**

Rod for use with regular arm.

### **EXTENDED ROD, 9150-79LR**

Long rod for use with long arm.

# LCN 9150 SERIES

## ACCESSORIES

### INSTALLATION ACCESSORIES

#### **HALL EFFECT ADAPTER HARNESS, 9150-3428-1**

Allows a prior model motor gearbox to work with a new control box. Encoder conversion. Used with 9150-3598-1 & 9150-3430-1.

#### **HALL EFFECT ADAPTER HARNESS, 9150-3428-2**

Allows a prior model control box to work with a new motor gearbox. Encoder conversion. Used with 9150-3598-2 & 9150-3430-2.

#### **POWER ADAPTER HARNESS, 9150-3598-1**

Allows a prior model motor gearbox to work with a new control box. AC Power conversion. Used with 9150-3428-1 & 9150-3430-1.

#### **POWER ADAPTER HARNESS, 9150-3598-2**

Allows a prior model control box to work with a new motor gearbox. AC power conversion. Used with 9150-3428-2 & 9150-3430-2.

#### **MOTOR ADAPTER CABLE, 9150-3430-1**

Allows a prior model control box to work with a new motor gearbox. Motor conversion. Used with 9150-3428-1 & 9150-3598-1.

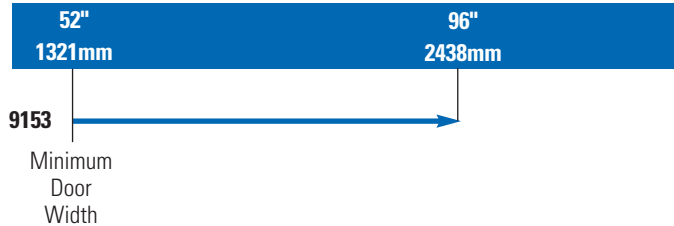
#### **MOTOR ADAPTER CABLE, 9150-3430-2**

Allows a prior model motor gearbox to work with a new control box. Motor conversion. Used with 9150-3428-2 & 9150-3598-2.

## TABLE OF SIZES

→ Indicates recommended range of door width for operator.  
Note: For All Benchmark Series  
52" minimum door width for full length push double door operator.

### DOOR WIDTH



## HOW-TO-ORDER 9150 SERIES OPERATORS

### 1. SPECIFY FINISH.

- Standard Anodized Finish \_\_\_\_\_  
Aluminum or Dark Bronze

#### **Operator will be shipped with:**

- STANDARD MOTOR GEARBOX (2 ea) (SF)
  - STANDARD CONTROL BOX (2 ea.) (SC)
  - MOUNTING BRACKET (2 ea.)
  - 72" METAL COVER (CL72)
  - REGULAR ARMS (2 ea.) (3077)
  - WOOD and MACHINE SCREW PACK
- Unless options listed below are selected.*

## OPERATOR OPTIONS

### COVER

- Full Cover (CL\_\_\_\_\_) (Specify length 52" to 96")

### CONTROL BOX

- Premium (PC) \_\_\_\_\_

### ARM

- Long Arm (3077L)  
(reveals 6" to 9 3/4")

### SPECIAL TEMPLATE

- ST-\_\_\_\_\_

