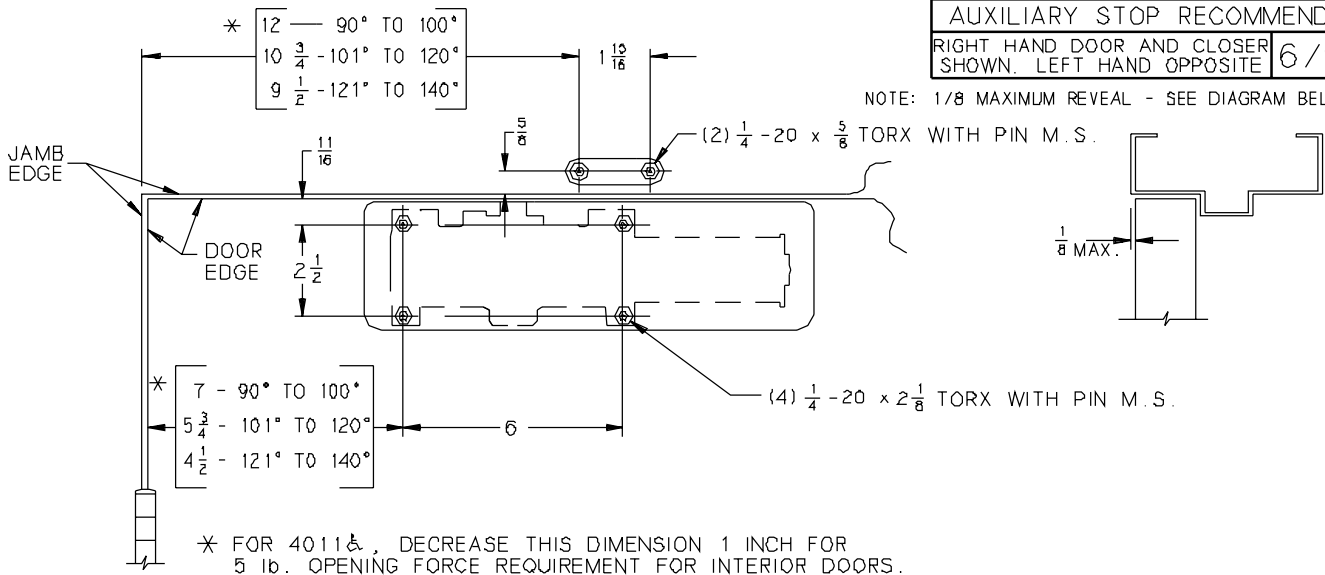


4511 & } NON HOLD OPEN (140° MAX)  
 4513 } DELAYED ACTION NOT AVAILABLE  
 4514 } WITH 4516  
 4515 }  
 4516 }

AUXILIARY STOP RECOMMENDED

RIGHT HAND DOOR AND CLOSER SHOWN, LEFT HAND OPPOSITE 6/96

NOTE: 1/8" MAXIMUM REVEAL - SEE DIAGRAM BELOW



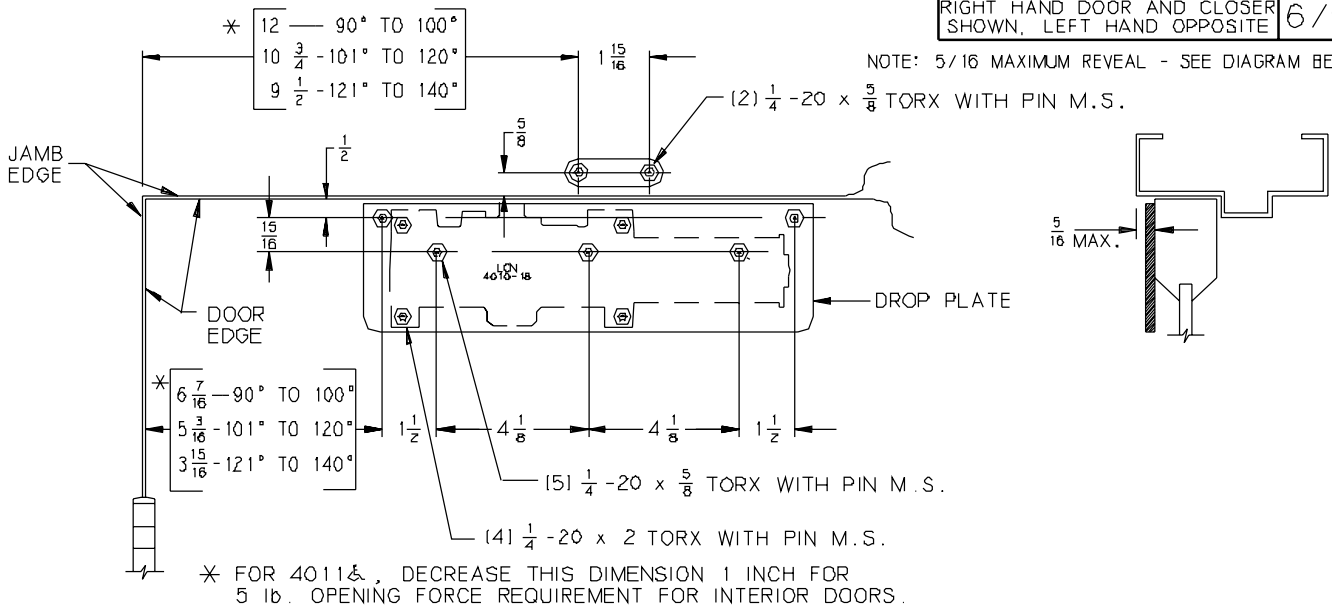
\* FOR 4011 &, DECREASE THIS DIMENSION 1 INCH FOR 5 lb. OPENING FORCE REQUIREMENT FOR INTERIOR DOORS.

4511 DP & } NON HOLD OPEN (140° MAX)  
 4513 DP } DELAYED ACTION NOT AVAILABLE  
 4514 DP } WITH 4516  
 4515 DP }  
 4516 DP }

AUXILIARY STOP RECOMMENDED

RIGHT HAND DOOR AND CLOSER SHOWN, LEFT HAND OPPOSITE 6/96

NOTE: 5/16" MAXIMUM REVEAL - SEE DIAGRAM BELOW



\* FOR 4011 &, DECREASE THIS DIMENSION 1 INCH FOR 5 lb. OPENING FORCE REQUIREMENT FOR INTERIOR DOORS.

GENERAL NOTES-

1. CLOSER SIZE: 12 1/4 x 3 1/2 x 2 5/32 (2 3/8 WITH DROP PLATE).
2. LOCATE CLOSER & SHOE FROM C OF PIVOT OR SWING CLEAR HINGE PIN IF USED.
- \* 3. FOR DELAYED ACTION CLOSERS GREATER THAN SIZE 1, INCREASE THIS DIM 2" WHEN DOOR CAN ONLY OPEN 90°
4. REINFORCING PER ANSI/SDI-100 RECOMMENDED FOR HOLLOW METAL DOORS AND FRAMES.
5. TAMPER RESISTANT TORX MACHINE SCREWS SUPPLIED BY LCN
6. MAXIMUM BUTT SIZE 5" x 5".

AUXILIARY STOP RECOMMENDED

INCH	1/8	1/4	5/16	1/2	5/8	11/16	15/16	1	1 1/8	
M.M.	3	6	8	13	16	17	24	25	38	
INCH	1 15/16	2	2 1/8	2 5/32	2 3/8	2 1/2	3 1/2	3 15/16	4 1/8	4 1/2
M.M.	49	51	54	55	60	64	89	100	105	114
INCH	5	5 3/16	5 3/4	6	6 7/16	7	9 1/2	10 3/4	12	12 1/4
M.M.	127	132	146	152	164	178	241	273	305	311

No.	REVISION	BY	DATE	<b>LCN</b> <sup>®</sup>	APP BY JEJ 6/96
3	TEMPLATE UPDATE	JEJ	6/96		DO NOT SCALE
SECURITY CLOSER ON DOOR, AND ON A NO. 18 DROP PLATE					
4510/4511 &					