

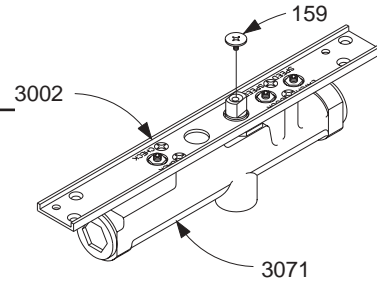
## Cylinder Assemblies

331(2-4)-3071	Cylinder Assembly	F, S, H
	<i>Includes cylinder mounting/finish plate &amp; screw pack</i>	
	<i>(WMS standard – please specify other)</i>	
	<i>Cylinder assembly is size specific (not adjustable)</i>	

## Individual Cylinder Parts

Individual cylinder parts for 330-3071

330-159	Arm Screw	F
330-3002	Mounting/Finish Plate	F, S, H



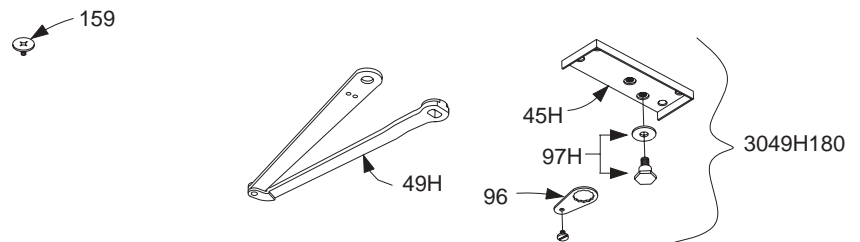
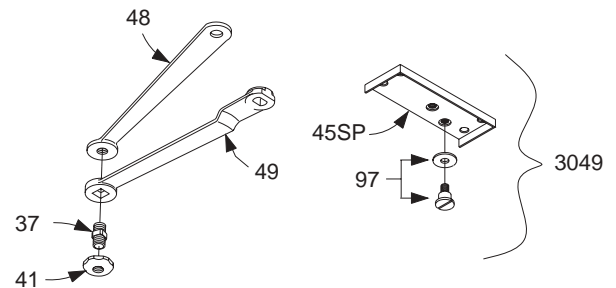
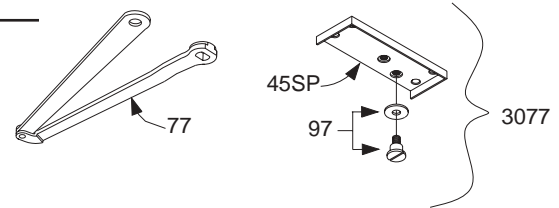
## Complete Arm Assemblies

330-3077	Regular Arm	F, H
	<i>Includes 330-45SP, -77, -97, &amp; -159</i>	
330-3049	Hold-Open Arm	F, H
	<i>Includes 330-37, -41, -45SP, -48, -49, -97, &amp; -159</i>	
330-3049H180	180 Hold-Open Arm	F, H
	<i>Includes 330-45H, -48, -49H, -96, -97H, &amp; -159</i>	

## Individual Arm Parts

Individual arm parts for 330-3077, -3049, & -3049H180

330-37	Hold-Open Stud	F, H
330-41	Hold-Open Nut	F
330-45H	Hold-Open Shoe Assembly	F, H
	<i>Includes 330-96 &amp; -97H</i>	
330-45SP	HO Shoe Assembly (H180)	F, H
	<i>Includes 330-97</i>	
330-48	Hold-Open Forearm	F, H
330-49	Hold-Open Main Arm	F
330-49H	HO Main & Forearm (H180)	F, H
330-77	Main Arm & Forearm	F, H
330-96	Bushing Assembly	F
330-97	Screw & Washer Set	F
330-97H	Hold-Open Stud & Washer Set	F, H
330-159	Arm Screw	F



Please specify finish (F), size (S), hand (H), & voltage (V) where indicated. See the latest edition of the LCN Catalog for part descriptions and specifications on many of the items shown above. List prices for items shown above can be located in the current LCN Price List.

# LCN 330 SERIES

Please specify finish **(F)**, size **(S)**, hand **(H)**, & voltage **(V)** where indicated. See the latest edition of the LCN Catalog for part descriptions and specifications on many of the items shown above. List prices for items shown above can be located in the current LCN Price List.