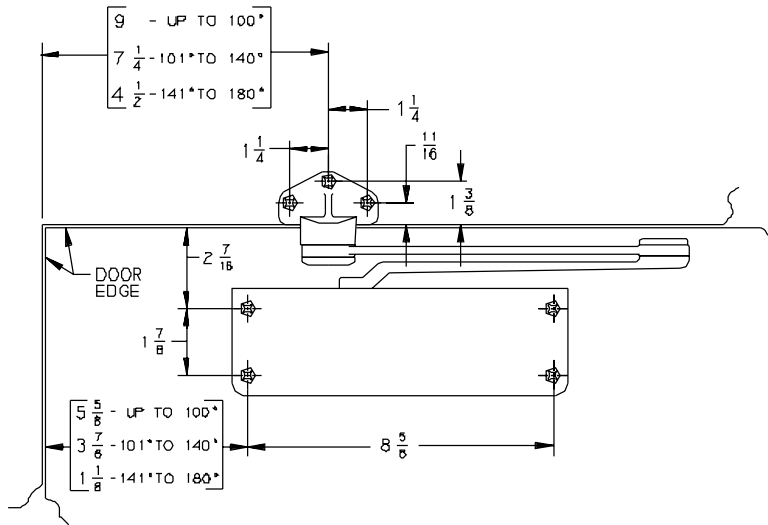


PUSH SIDE MTG. APPLIES TO:  
 4131 } NON HOLD OPEN (90°-180°)  
 4132 } H-180 (90°-180° HOLD OPEN)  
 4133 }

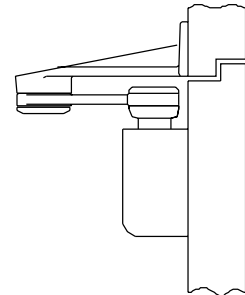
MOUNTING SCREWS-  
 (8) 1/4"-20 x 5/8" P.H.M.S.  
 (1) 1/4"-20 x 1 1/2" P.H.M.S.  
 OR  
 (5) NO. 14 x 2 P.H.W.S.  
 (4) NO. 14 x 1 1/4" P.H.W.S.

L.H. SHOWN, R.H. OPPOSITE



PUSH SIDE MTG WITH 145 APPLIES TO:  
 4131 } NON HOLD OPEN (90°-180°)  
 4132 } H-180 (90°-180° HOLD OPEN)  
 4133 }

MOUNTING SCREWS-  
 (7) 1/4"-20 x 5/8" P.H.M.S.  
 OR  
 (7) NO. 14 x 1 1/2" P.H.W.S.



L.H. SHOWN, R.H. OPPOSITE

- GENERAL NOTES-
1. MINIMUM DISTANCE BETWEEN 2 DOORS ON THE SAME JAMB IS 5 1/2".
  2. LOCATE CLOSER & SHOE FROM C OF PIVOT WHEN USED.
  3. REINFORCING PER ANSI/SDI-100 RECOMMENDED FOR HOLLOW METAL DOORS AND FRAMES
  4. FOR 180° OPENING THE MAXIMUM ALLOWABLE BUTT SIZE IS 4 1/2" x 4 1/2".

AUXILIARY STOP RECOMMENDED

INCH	1/4	5/16	5/8	1 1/16	1 1/8	1 1/4	1 3/8	1 1/2	1 11/16	1 3/4
M.M.	6	8	16	18	27	29	32	35	38	43
INCH	1 7/8	2	2 7/16	3 7/8	4	4 1/2	5 1/2	5 5/8	7 1/4	8 5/8
M.M.	48	51	62	98	102	114	140	143	184	219

No.	REVISION	BY	DATE
6	TEMPLATE UPDATE	JEJ	6/96
7	TEMPLATE UPDATE	AMM	2/98

**LCN**®

APP BY JEJ 6/96  
DO NOT SCALE

SMOOTHEE CLOSER (PUSH SIDE MOUNTED)  
WITH REGULAR ARM OR WITH 145 SHOE.

4130