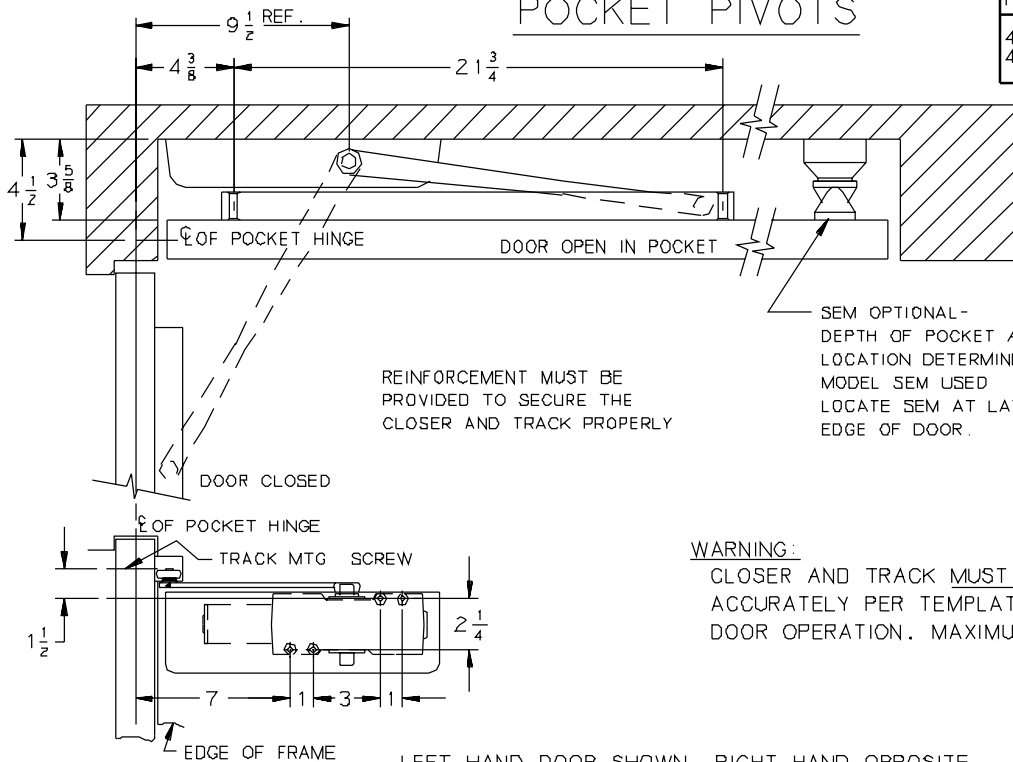


POCKET PIVOTS



POCKET INSTALLATION APPLIES TO:
 4003 T } MAX. OPENING 90°
 4004 T } HOLD OPEN POINT 90°
 WITH MAGNET

SIZE OF MOUNTING SCREWS
 (2) 1/4" -20 x 1 1/2" P.H.M.S.
 (4) 1/4" -20 x 2 1/8" P.H.M.S.
 OR
 (2) No. 14 x 2 3/8" P.H.W.S.
 (4) No. 14 x 2 7/8" P.H.W.S.

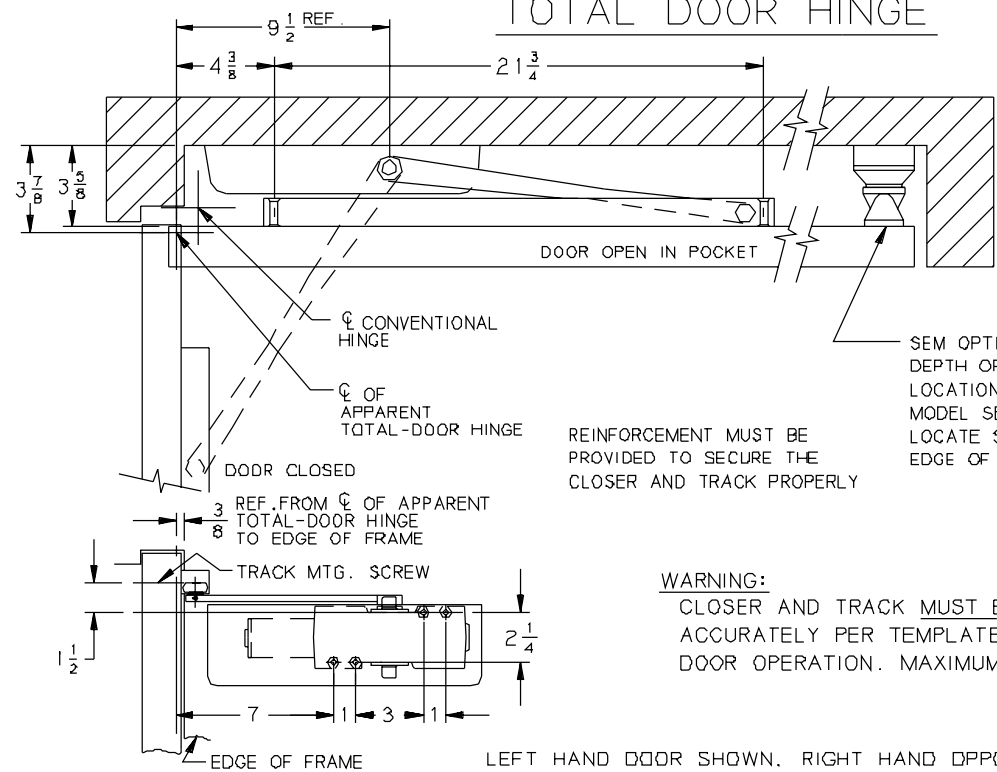
REINFORCEMENT MUST BE PROVIDED TO SECURE THE CLOSER AND TRACK PROPERLY

SEM OPTIONAL- DEPTH OF POCKET AT THIS LOCATION DETERMINED BY MODEL SEM USED LOCATE SEM AT LATCH EDGE OF DOOR.

WARNING:
 CLOSER AND TRACK MUST BE INSTALLED ACCURATELY PER TEMPLATE TO ASSURE PROPER DOOR OPERATION. MAXIMUM DOOR HOLD OPEN 90°

LEFT HAND DOOR SHOWN, RIGHT HAND OPPOSITE

TOTAL DOOR HINGE



POCKET INSTALLATION APPLIES TO:
 4003 T } MAX. OPENING 90°
 4004 T } HOLD OPEN POINT 90°
 WITH MAGNET

SIZE OF MOUNTING SCREWS
 (2) 1/4" -20 x 1 1/2" P.H.M.S.
 (4) 1/4" -20 x 2 1/8" P.H.M.S.
 OR
 (2) No. 14 x 2 3/8" P.H.W.S.
 (4) No. 14 x 2 7/8" P.H.W.S.

REINFORCEMENT MUST BE PROVIDED TO SECURE THE CLOSER AND TRACK PROPERLY

SEM OPTIONAL- DEPTH OF POCKET AT THIS LOCATION DETERMINED BY MODEL SEM USED LOCATE SEM AT LATCH EDGE OF DOOR.

WARNING:
 CLOSER AND TRACK MUST BE INSTALLED ACCURATELY PER TEMPLATE TO ASSURE PROPER DOOR OPERATION. MAXIMUM DOOR HOLD OPEN 90°

LEFT HAND DOOR SHOWN, RIGHT HAND OPPOSITE

GENERAL NOTES-

1. CLOSER SIZE: 12 1/4 x 3 1/2 x 2 5/32
2. IF DOOR IS HUNG ON SWING CLEAR HINGES. CONSULT FACTORY.
3. REINFORCING PER ANSI/SDI-100 RECOMMENDED FOR HOLLOW METAL DOORS AND FRAMES.

AUXILIARY STOP RECOMMENDED

INCH	1/4	3/8	1	1 1/2	2 1/8	2 5/32	2 1/4	2 3/8	2 7/8	
M.M.	6	10	25	38	54	55	57	60	73	
INCH	3	3 1/2	3 5/8	3 7/8	4 3/8	4 1/2	7	9 1/2	12 1/4	2 1 3/4
M.M.	76	89	92	98	112	114	178	241	311	552

No.	REVISION	BY	DATE
2	TEMPLATE UPDATE	JEJ	6/96

LCN® APP BY JEJ 6/96
 DO NOT SCALE
 SMOOTHIE CLOSER WITH TRACK (PULL SIDE MOUNTED) FOR 90° INSTALLATION
4000 T

