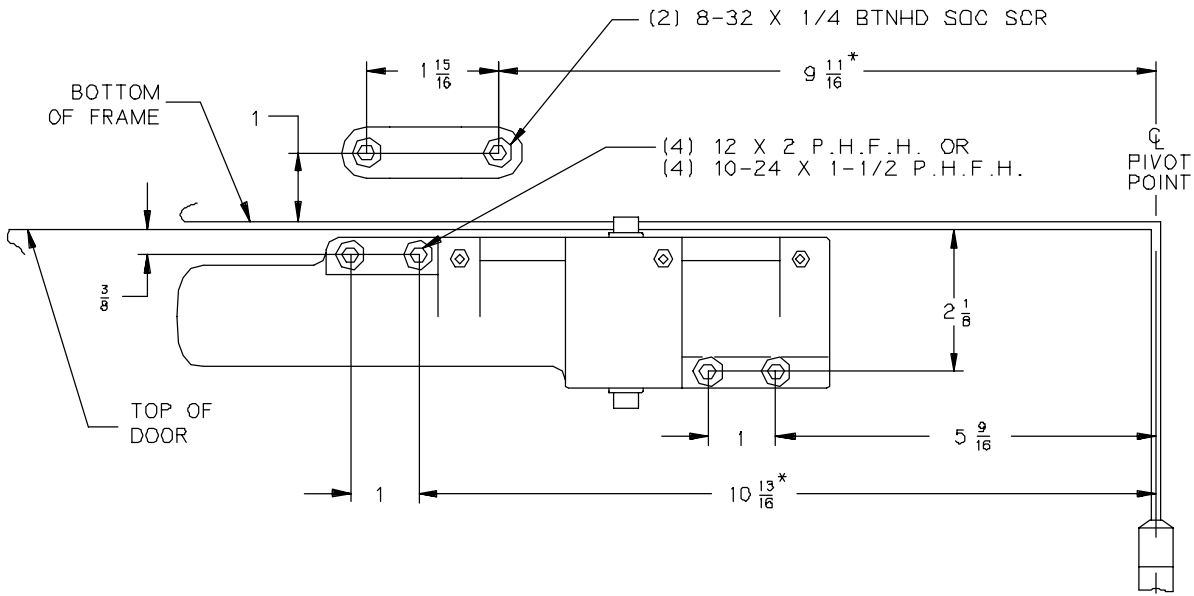


PULL SIDE MOUNTING APPLIES TO:

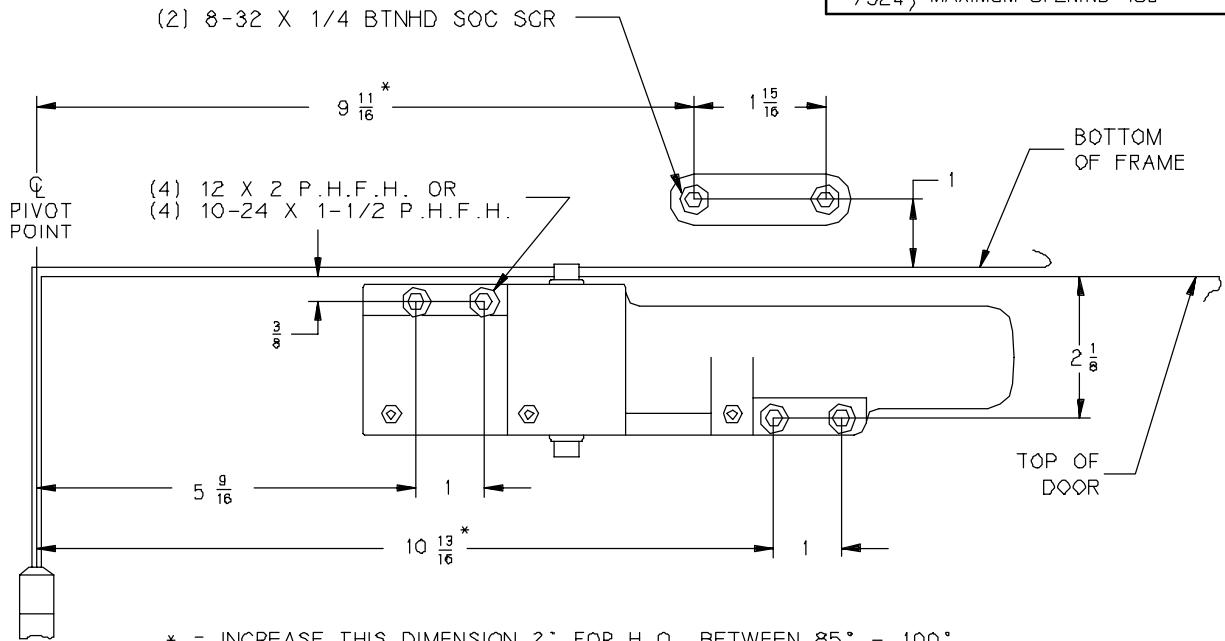
1521 } HOLD OPEN UP TO 180°
/524 } MAXIMUM OPENING 180°



* = INCREASE THIS DIMENSION 2" FOR H.O. BETWEEN 85° - 100°
LEFT HAND APPLICATION SHOWN

PULL SIDE MOUNTING APPLIES TO:

1521 } HOLD OPEN UP TO 180°
/524 } MAXIMUM OPENING 180°



* = INCREASE THIS DIMENSION 2" FOR H.O. BETWEEN 85° - 100°
RIGHT HAND APPLICATION SHOWN

GENERAL NOTES-

1. LOCATE CLOSER & ARM FROM \bar{C} OF PIVOT OR SWING CLEAR HINGE PIN IF USED.
2. REINFORCING PER ANSI/SDI-100 RECOMMENDED FOR HOLLOW METAL DOORS & FRAMES.
3. CLOSER SIZE IS $10\frac{3}{8} \times 2\frac{7}{8} \times 1\frac{3}{4}$

INCH	$\frac{1}{4}$	$\frac{5}{16}$	$\frac{3}{8}$	$\frac{11}{16}$	1	$1\frac{1}{16}$	$1\frac{1}{4}$	$1\frac{11}{16}$
M.M.	6	8	9	17	25	26	31	42

INCH	$1\frac{3}{4}$	$1\frac{15}{16}$	2	$2\frac{1}{8}$	$2\frac{1}{2}$	$4\frac{3}{16}$	$4\frac{3}{4}$	$5\frac{1}{4}$
M.M.	44	48	50	53	63	105	119	131

INCH	$5\frac{9}{16}$	$8\frac{1}{16}$	$8\frac{3}{8}$	$9\frac{11}{16}$	$10\frac{13}{16}$
M.M.	139	202	209	242	270

No.	REVISION	BY	DATE

LCN®

APP BY AMM 3/99
DO NOT SCALE

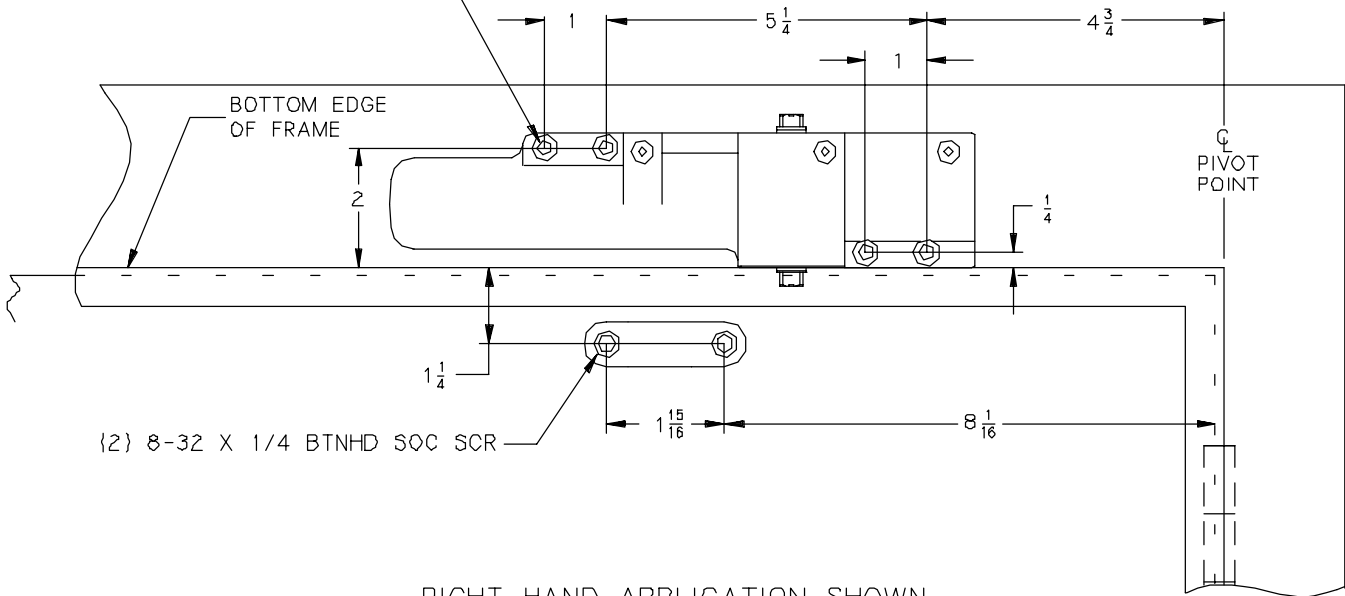
1521 SERIES CLOSER
(PULL SIDE MOUNTED) ON DOOR

1521 (PULL SIDE)

PUSH SIDE MOUNTING APPLIES TO:

1521 } HOLD OPEN UP TO 180°
/524 } MAXIMUM OPENING 180°

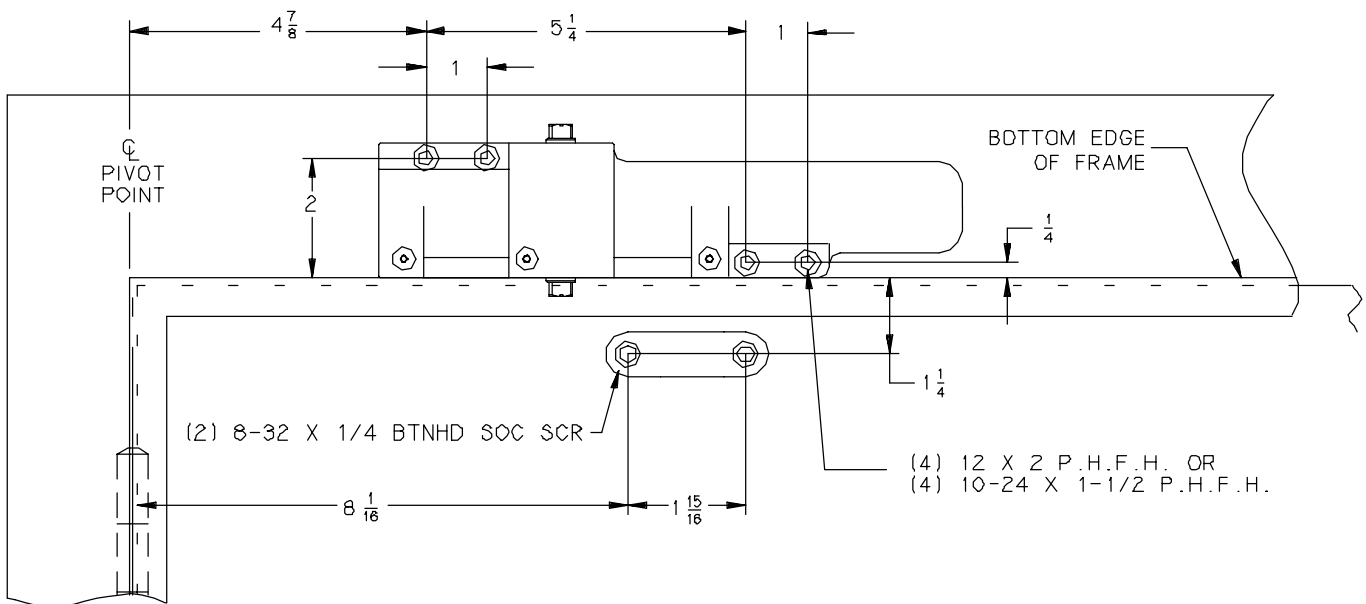
- (4) 12 X 2 P.H.F.H. OR
- (4) 10-24 X 1-1/2 P.H.F.H.



RIGHT HAND APPLICATION SHOWN

PUSH SIDE MOUNTING APPLIES TO:

1521 } HOLD OPEN UP TO 180°
/524 } MAXIMUM OPENING 180°



LEFT HAND APPLICATION SHOWN

GENERAL NOTES-

1. LOCATE CLOSER & ARM FROM ϕ OF PIVOT OR SWING CLEAR HINGE PIN IF USED.
2. REINFORCING PER ANSI/SDI-100 RECOMMENDED FOR HOLLOW METAL DOORS & FRAMES.
3. CLOSER SIZE IS $10\frac{3}{8} \times 2\frac{7}{8} \times 1\frac{3}{4}$

INCH	$\frac{1}{4}$	$\frac{5}{16}$	$\frac{3}{8}$	$\frac{11}{16}$	1	$1\frac{1}{16}$	$1\frac{1}{4}$	$1\frac{11}{16}$
M.M.	6	8	9	17	25	26	31	42

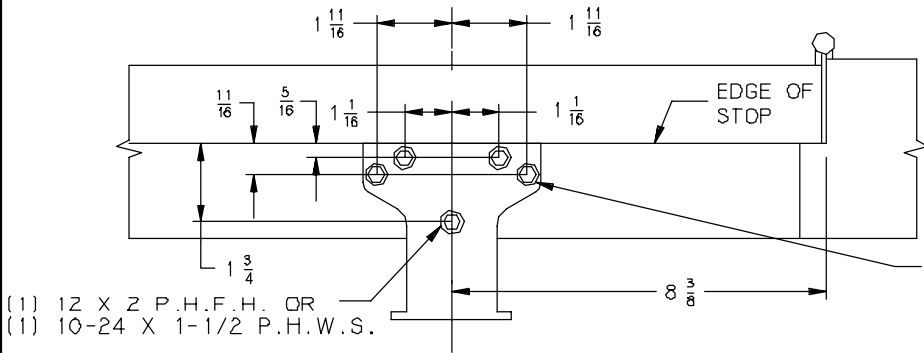
INCH	$1\frac{3}{4}$	$1\frac{15}{16}$	2	$2\frac{1}{8}$	$2\frac{1}{2}$	$4\frac{3}{16}$	$4\frac{3}{4}$	$5\frac{1}{4}$
M.M.	44	48	50	53	63	105	119	131

INCH	$5\frac{9}{16}$	$8\frac{1}{16}$	$8\frac{3}{8}$	$9\frac{11}{16}$	$10\frac{13}{16}$
M.M.	139	202	209	242	270

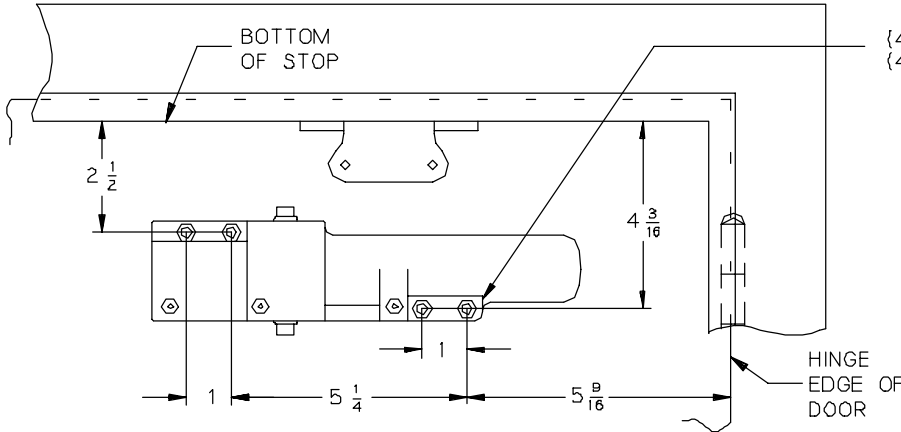
No.	REVISION	BY	DATE	LCN®	APP BY AMM 3/99
					DO NOT SCALE
				1521 SERIES CLOSER (PUSH SIDE MOUNTED, TOP JAMB)	
				1521	(PUSH SIDE)

PUSH SIDE MOUNTING APPLIES TO:

1521 } HOLD OPEN UP TO 180°
/524 } MAXIMUM OPENING 180°



(4) 12 X 1 P.H.F.H. OR
(4) 10-24 X 3/4 P.H.W.S.

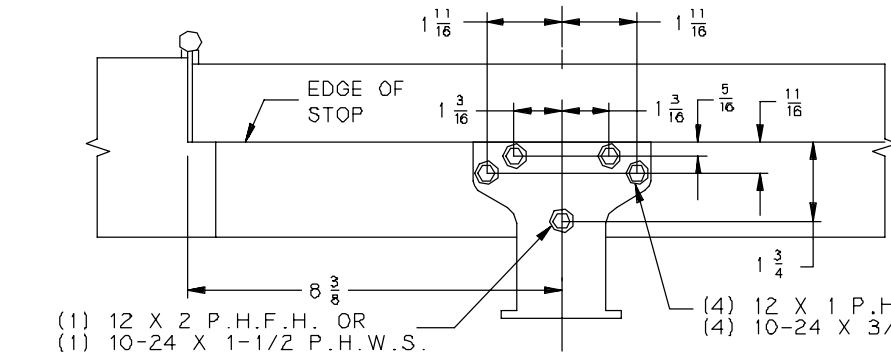


(4) 12 X 2 P.H.F.H. OR
(4) 10-24 X 1-1/2 P.H.F.H.

RIGHT HAND APPLICATION SHOWN

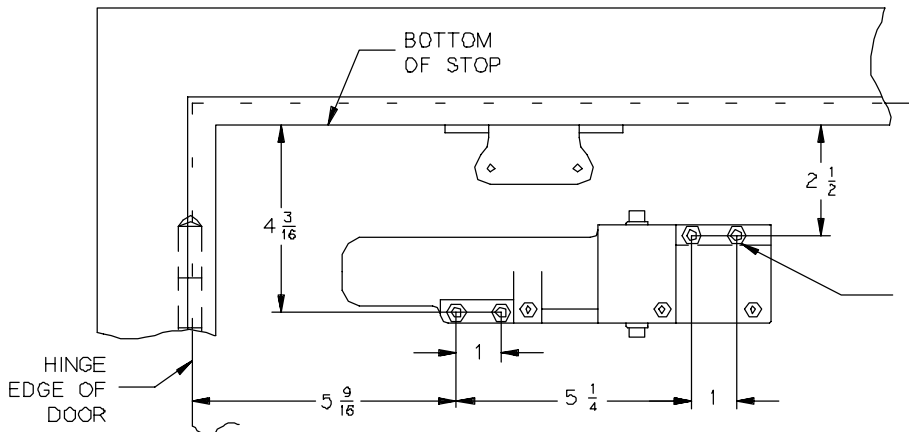
PUSH SIDE MOUNTING APPLIES TO:

1521 } HOLD OPEN UP TO 180°
/524 } MAXIMUM OPENING 180°



(1) 12 X 2 P.H.F.H. OR
(1) 10-24 X 1-1/2 P.H.W.S.

(4) 12 X 1 P.H.F.H. OR
(4) 10-24 X 3/4 P.H.W.S.



(4) 12 X 2 P.H.F.H. OR
(4) 10-24 X 1-1/2 P.H.F.H.

LEFT HAND APPLICATION SHOWN

GENERAL NOTES-

1. LOCATE CLOSER & SHOE FROM ϕ OF PIVOT OR SWING CLEAR HINGE PIN IF USED.
2. REINFORCING PER ANSI/SDI-100 RECOMMENDED FOR HOLLOW METAL DOORS & FRAMES.
3. CLOSER SIZE IS $10\frac{3}{8} \times 2\frac{7}{8} \times 1\frac{3}{4}$

INCH	$\frac{1}{4}$	$\frac{5}{16}$	$\frac{3}{8}$	$\frac{11}{16}$	1	$1\frac{1}{16}$	$1\frac{1}{4}$	$1\frac{11}{16}$
M.M.	6	8	9	17	25	26	31	42
INCH	$1\frac{3}{4}$	$1\frac{15}{16}$	2	$2\frac{1}{8}$	$2\frac{1}{2}$	$4\frac{3}{16}$	$4\frac{3}{4}$	$5\frac{1}{4}$
M.M.	44	48	50	53	63	105	119	131
INCH	$5\frac{9}{16}$	$8\frac{1}{16}$	$8\frac{3}{8}$	$9\frac{11}{16}$	$10\frac{13}{16}$			
M.M.	139	202	209	242	270			

No.	REVISION	BY	DATE

LCN[®]

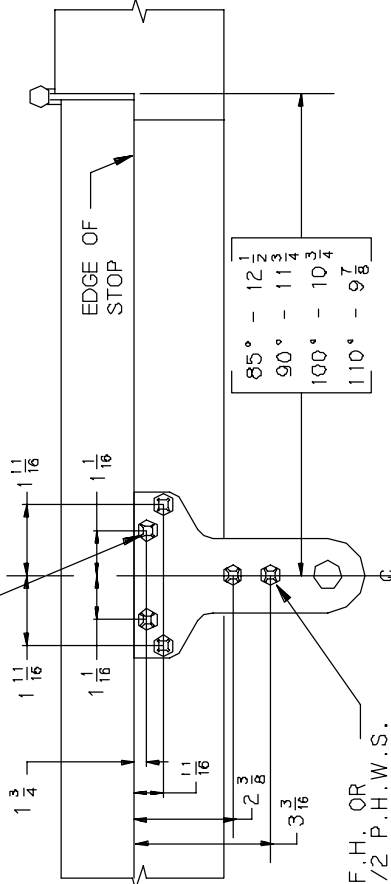
APP
BY AMM 3/99
DO NOT SCALE

1521 SERIES CLOSER/PARALLEL ARM
(PUSH SIDE MOUNTED)

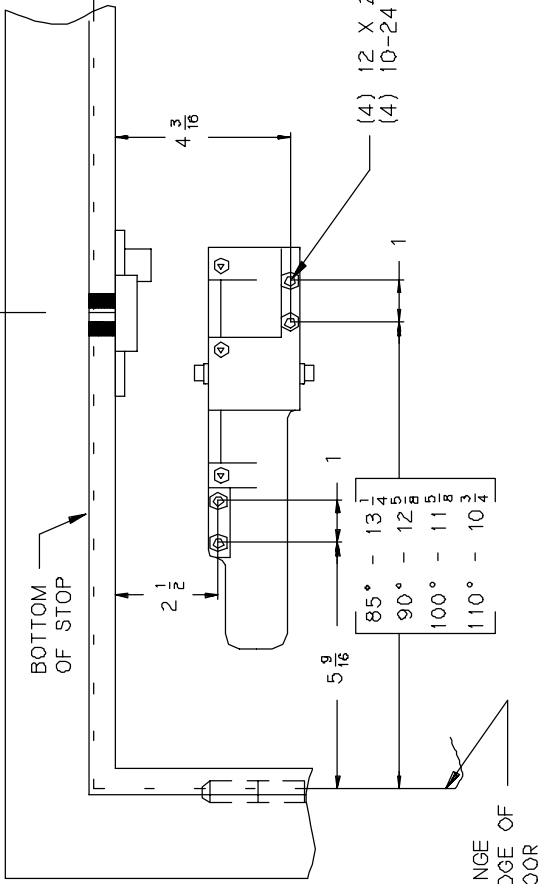
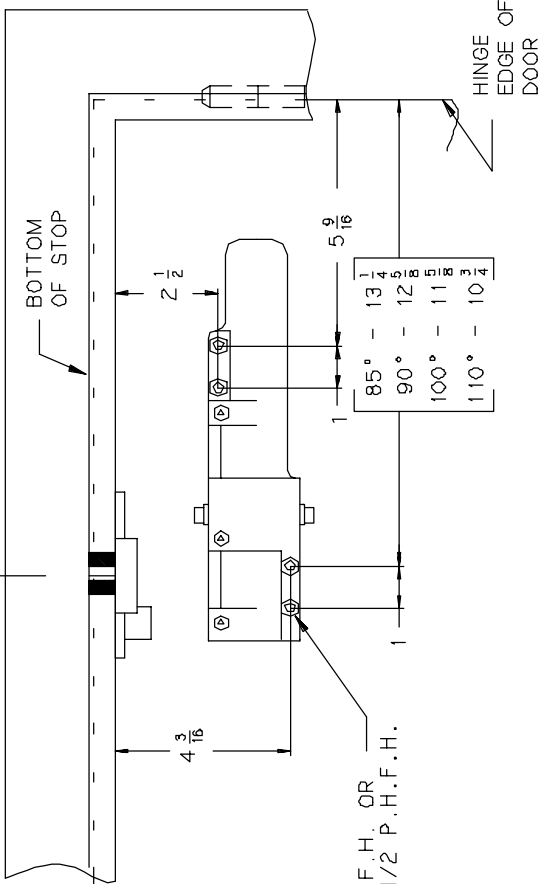
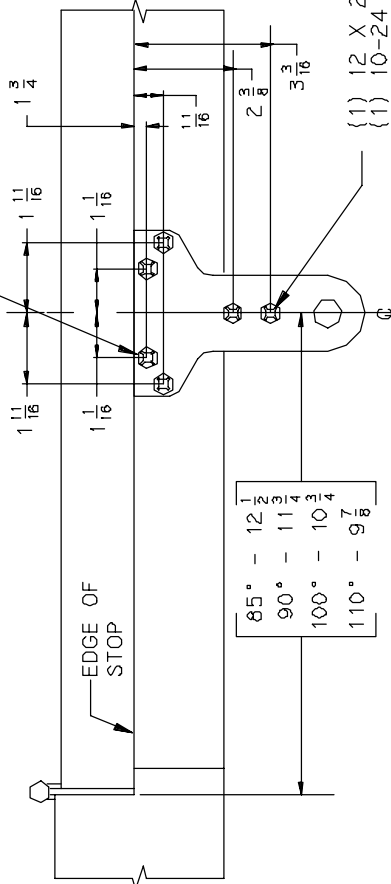
1521 (PUSH SIDE)

PUSH SIDE MOUNTING APPLIES TO:
 1521 } HOLD OPEN UP TO 180°
 /524 } MAXIMUM OPENING 180°

(4) 12 X 1 P.H.F.H. OR
 (4) 10-24 X 3/4 P.H.W.S.



(1) 12 X 2 P.H.F.H. OR
 (1) 10-24 X 1-1/2 P.H.W.S.



RIGHT HAND APPLICATION SHOWN

LEFT HAND APPLICATION SHOWN

- GENERAL NOTES-
- LOCATE CLOSER & SHOE FROM ϕ OF PIVOT OR SWING CLEAR HINGE PIN IF USED
 - REINFORCING PER ANSI/S3DI-100 RECOMMENDED FOR HOLLOW METAL DOORS & FRAMES.
 - CLOSER SIZE IS $10 \frac{3}{8} \times 2 \frac{7}{8} \times 1 \frac{3}{4}$

INCH	1/4	5/16	3/8	11/16	1	1 1/16	1 1/4	1 1/2
M.M.	6	8	9	17	25	26	31	42
INCH	3/4	1 1/16	2	2 1/8	2 1/2	3 1/8	4 1/4	5 1/4
M.M.	44	46	50	53	63	105	119	131
INCH	5 9/16	8 1/8	10 3/8	13 1/8	16 1/8	19 1/8	22 1/8	25 1/8
M.M.	139	202	264	330	410	490	565	640

No.	REVISION	BY	DATE	APP BY AMM 6/99
				DO NOT SCALE
				1521 SERIES CLOSER/PARALLEL ARM (PUSH SIDE MOUNTED)
				1521 SPRING CUSH