

Cylinder Assemblies

| | | |
|-----------|--|---|
| 1521-3071 | Cylinder Assembly | F |
| | <i>Includes screw pack (WMS standard – please specify other)</i> | |
| | <i>Size '1' cylinder is adjustable from size 1-4</i> | |

Individual Cylinder Parts

Individual cylinder parts for 1521-3071

| | | |
|----------|-----------|---|
| 1520-159 | Arm Screw | F |
|----------|-----------|---|

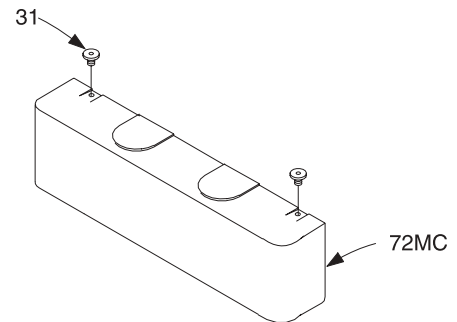
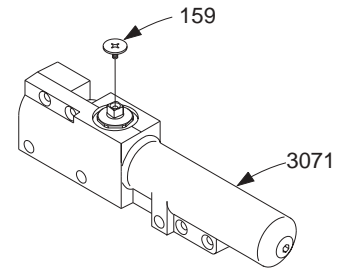
Covers

| | | |
|-----------|-----------------------------|---|
| 1520-72MC | Metal Cover | F |
| | <i>Includes 1520-31 (2)</i> | |

Individual Cover Parts

Individual cover parts for 1520-72MC

| | | |
|---------|-------------|---|
| 1520-31 | Cover Screw | F |
|---------|-------------|---|



Please specify finish (**F**), size (**S**), hand (**H**), & voltage (**V**) where indicated. See the latest edition of the LCN Catalog for part descriptions and specifications on many of the items shown above. List prices for items shown above can be located in the current LCN Price List.

LCN 1520 SERIES

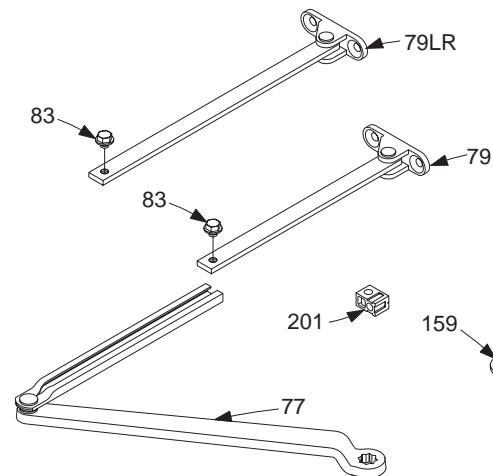
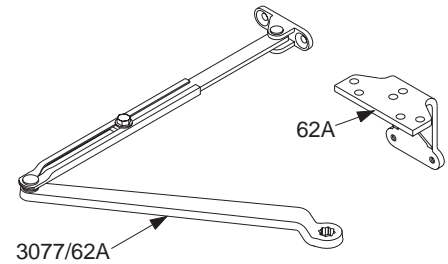
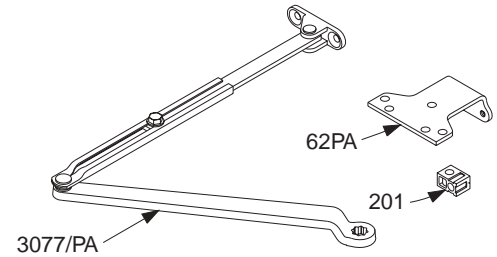
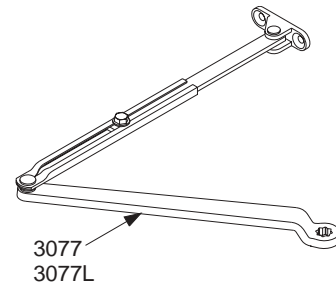
Complete Arm Assemblies

| | | |
|---------------|---|---|
| 1520-3077 | Regular Arm | F |
| | <i>Includes 1520-77, -79, -83, & -159</i> | |
| 1520-3077/PA | Regular Arm w/62PA | F |
| | <i>Includes 1520-62PA, -77, -79, -83, 159, & -201</i> | |
| 1520-3077/62A | Regular Arm w/62A | F |
| | <i>Includes 1520-62A, -77, -79, -83, -159, & -201</i> | |
| 1520-3077L | Long Arm | F |
| | <i>Includes 1520-77, -79LR, -83, & -159</i> | |

Individual Arm Parts

Individual arm parts for 1520-3077, -3077/PA, & -3077/62A

| | | |
|-----------|---|---|
| 1520-62A | Auxiliary Parallel Arm Shoe | F |
| 1520-62PA | Parallel Arm Shoe | F |
| | <i>Includes 1520-201</i> | |
| 1520-77 | Main Arm & Forearm | F |
| | <i>Includes 1520-159</i> | |
| 1520-79 | Rod & Shoe | F |
| | <i>Includes 1520-83 / Length is 8 3/8" (213mm)</i> | |
| 1520-79LR | Long Rod & Shoe | F |
| | <i>Includes 1520-83 / Length is 12 3/8" (314mm)</i> | |
| 1520-83 | Arm Screw | F |
| 1520-159 | Arm Screw | F |
| 1520-201 | Fifth Screw Spacer | |



Please specify finish (F), size (S), hand (H), & voltage (V) where indicated. See the latest edition of the LCN Catalog for part descriptions and specifications on many of the items shown above. List prices for items shown above can be located in the current LCN Price List.

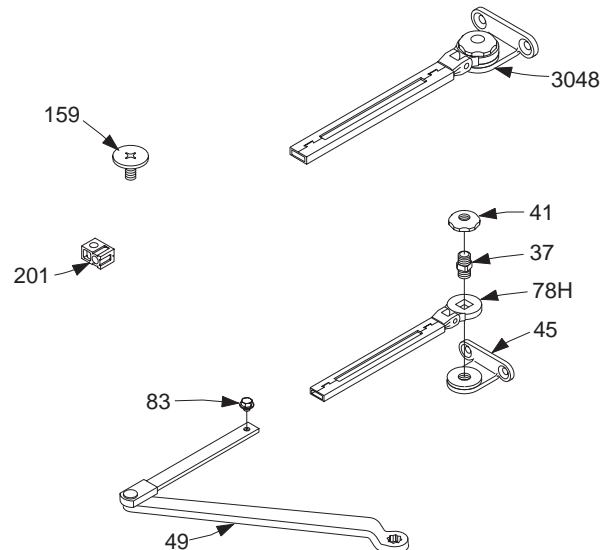
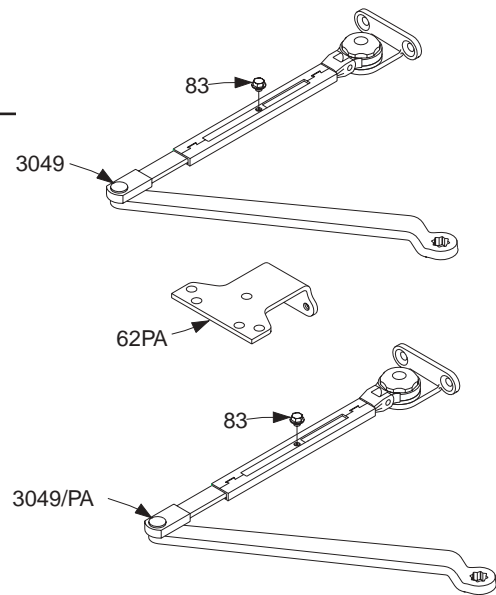
Complete Arm Assemblies

| | | |
|--------------|--|---|
| 1520-3049 | Hold-Open Arm | F |
| | <i>Includes 1520-49, -83, -159, & -3048</i> | |
| 1520-3049/PA | Hold-Open Arm w/62PA | F |
| | <i>Includes 1520-49, 62PA, -83, 159, -201, & -3040</i> | |

Individual Arm Parts

Individual arm parts for 1520-3049 & -3049/PA,

| | | |
|-----------|---|---|
| 1520-37 | Hold-Open Stud | F |
| 1520-41 | Hold-Open Nut | F |
| 1520-45 | HO Shoe | F |
| 1520-49 | HO Main Arm & Rod | F |
| | <i>Includes 1520-83H & -159</i> | |
| 1520-62PA | Parallel Arm Shoe | F |
| | <i>Includes 1520-201</i> | |
| 1520-78H | H Head & Tube | F |
| | <i>Includes 1520-159</i> | |
| 1520-83 | Arm Screw | F |
| 1520-159 | Arm Screw | F |
| 1520-201 | Fifth Screw Spacer | F |
| 1520-3048 | HO Head & Tube Assy | F |
| | <i>Includes 1520-37, -41, -78H, & -45</i> | |
| | <i>Length is 6 3/4" (171mm)</i> | |



Please specify finish (**F**), size (**S**), hand (**H**), & voltage (**V**) where indicated. See the latest edition of the LCN Catalog for part descriptions and specifications on many of the items shown above. List prices for items shown above can be located in the current LCN Price List.

LCN 1520 SERIES

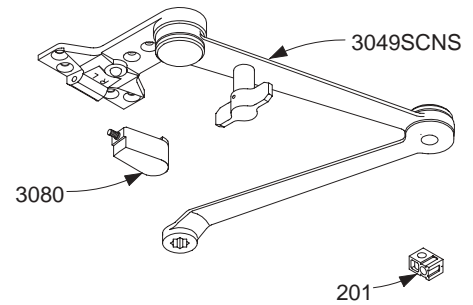
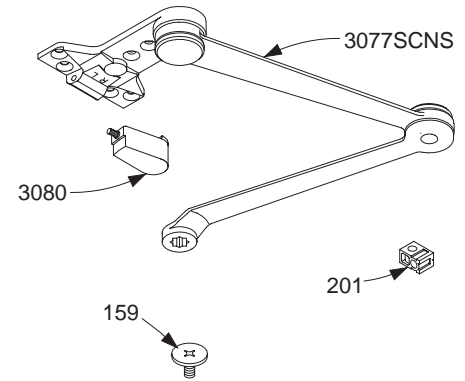
Complete Arm Assemblies

| | | |
|---------------|--|---|
| 1520-3077SCNS | Spring Cush-n-Stop Arm | F |
| | <i>Includes 1520 -159, -201, & -3080</i> | |
| 1520-3049SCNS | HO Spring Cush-n-Stop Arm | F |
| | <i>Includes 1520-159, -201, & -3080</i> | |

Individual Arm Parts

Individual arm parts for 1520-3077SCNS, & -3049SCNS

| | | |
|-----------|--------------------|---|
| 1520-159 | Arm Screw | F |
| 1520-201 | Fifth Screw Spacer | |
| 1520-3080 | Spring Cush Block | F |



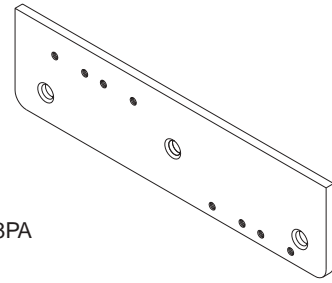
Please specify finish (**F**), size (**S**), hand (**H**), & voltage (**V**) where indicated. See the latest edition of the LCN Catalog for part descriptions and specifications on many of the items shown above. List prices for items shown above can be located in the current LCN Price List.

Mounting Plates

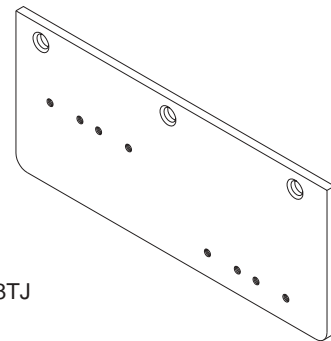
| | | |
|-----------|----------------|---|
| 1520-18PA | Mounting Plate | F |
| 1520-18TJ | Mounting Plate | F |

Installation Accessories

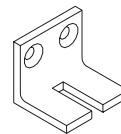
| | | |
|---------|-------------------|---|
| 1520-30 | Cush Shoe Support | F |
| 1520-61 | Blade Stop Spacer | F |



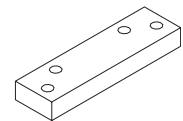
18PA



18TJ



30



61

Please specify finish (**F**), size (**S**), hand (**H**), & voltage (**V**) where indicated. See the latest edition of the LCN Catalog for part descriptions and specifications on many of the items shown above. List prices for items shown above can be located in the current LCN Price List.

LCN 1520 SERIES

Please specify finish **(F)**, size **(S)**, hand **(H)**, & voltage **(V)** where indicated. See the latest edition of the LCN Catalog for part descriptions and specifications on many of the items shown above. List prices for items shown above can be located in the current LCN Price List.