

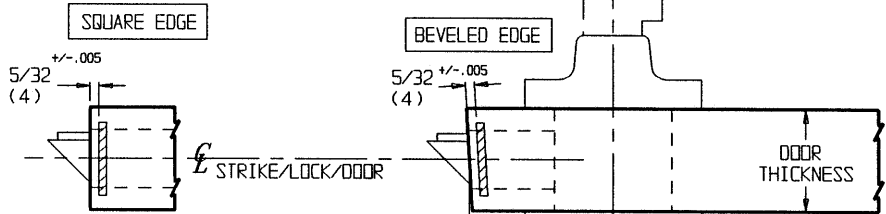
NOTES:

- BACKSET IS MEASURED FROM CENTERLINE OF BEVEL WHICH IS CENTERPOINT OF DOOR THICKNESS.
- DOOR PREP WITH 2-3/4" BACKSET MEETS ANSI STANDARDS A115.2 FOR STEEL STEEL DOORS AND A115.W2 FOR WOOD DOORS PLUS THROUGH BOLT HOLES SHOWN.
- DIMENSIONS GIVEN IN INCHES AND (MM).
- 1-1/4" STRIKE LIP SUITS FRAME FOR 1-3/4" THICK DOOR. LIP WILL VARY FOR OTHER DOOR THICKNESSES.

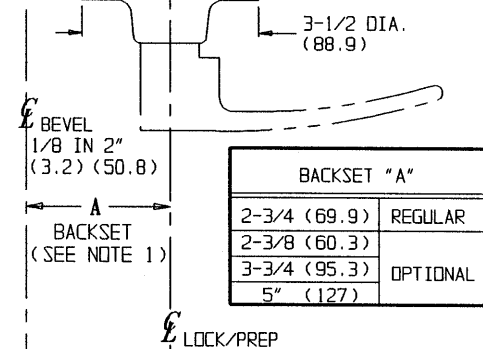
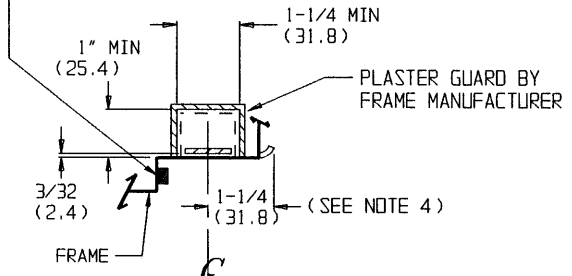
TEMPLATE CROSS REFERENCE

DESCRIPTION	TEMPLATE
CL3950 HALF DUMMY TRIM	T30682
586L19 OPTIONAL STRIKE	T30476
SF114, SFR114 FULL LIPSTRIKE	T30683

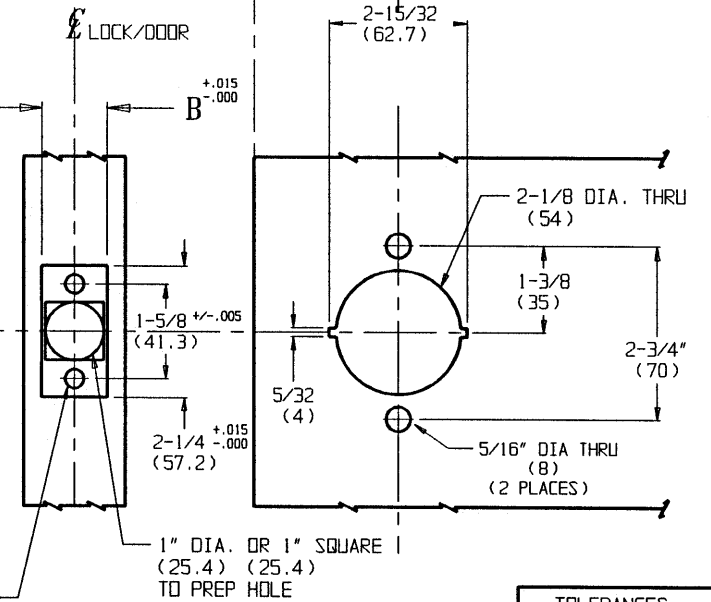
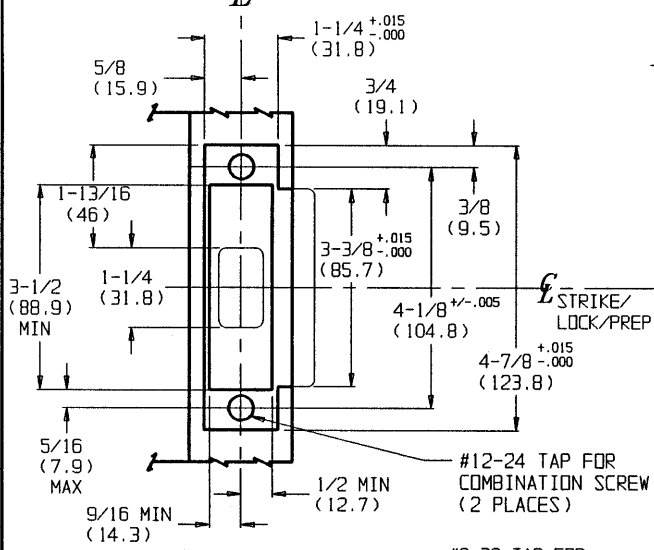
FRONT WIDTH B	
1-1/8 (28.6)	REGULAR
1" (25.4)	OPTIONAL



CAUTION: DOOR AND FRAME MANUFACTURERS
 WHEN DOOR GASKETING OR SILENCERS ARE USED, PROPER ALLOWANCES MUST BE MADE FOR STRIKE LOCATION TO MAINTAIN A COMMON CENTERLINE WITH LOCK AND DOOR AS SHOWN SO THAT BOLT WILL FREELY ENTER STRIKE.



BACKSET "A"	
2-3/4 (69.9)	REGULAR
2-3/8 (60.3)	
3-3/4 (95.3)	OPTIONAL
5" (127)	



FRAME DETAIL
 ANSI STRIKE 217L13 AND BOX 120F76 (REGULARLY FURNISHED)

#8-32 TAP FOR COMBINATION SCREW (2 PLACES)

DOOR DETAIL

TOLERANCES	
INCHES	(MM)
.005	(.127)
.015	(.381)

RESPONSIBILITY

Door and Frame Manufacturers are responsible for providing adequate construction or reinforcements for proper installation of hardware shown. All architectural builders hardware must be installed on properly reinforced doors and frames, regardless of the type, material, or method of construction.

CL3900 Series
 CYLINDRICAL LEVER LOCKSET

ALL FUNCTIONS AND TRIMS EXCEPT HALF DUMMY TRIM.



www.corbinrusswin.com

DO NOT SCALE DRAWING			
SUPERSEDES	T30681	DR.	DLD
DATE	7-03	TEMPLATE NUMBER	T30681-1