

Architectural Abstract TufCore™

FIBERGLASS/GYPSUM COMPOSITE CEILING PANELS

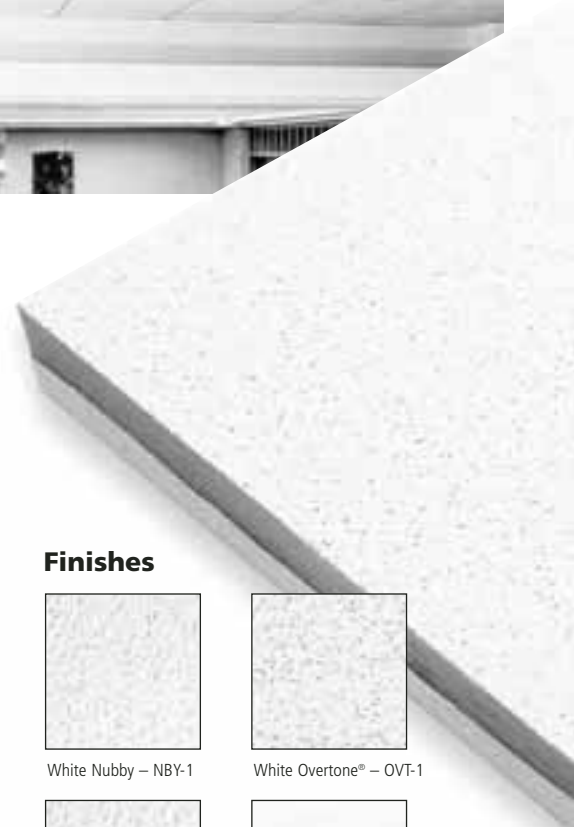
- Gypsum and fiberglass composite panel.
- Combines the NRC advantages of fiberglass with high CAC gypsum board in a single panel.
- Available in a variety of finish options and edge details.
- Maintain speech privacy.
- Especially well-suited to minimize sound transmission between adjacent spaces sharing a common plenum.
- Gypsum improves the CAC.
- Fiberglass is to increase NRC.
- "Checkerboard" with other Capaul® Brand products having the same finish.*

Item Number	Nominal Size (Inches)	Edge* Detail	NRC	CAC	LR	Sq. Ft. Per Carton
Safetone® Class A						
Black Mat Fabric						
1612-MAT-5	24 x 24 x 1-1/8	Trim	.65	40	.05	24
1610-MAT-5	24 x 48 x 1-1/8	Trim	.65	40	.05	48
White Nubby Fabric						
1612-NBY-1	24 x 24 x 1-1/8	Trim, Reveal, Narrow Reveal	.65	40	.85	24
1610-NBY-1	24 x 48 x 1-1/8	Trim, Reveal, Narrow Reveal	.65	40	.85	48
White Elite Vinyl						
1612-ELTP-1	24 x 24 x 1-1/8	Trim	.65	40	.84	24
1610-ELTP-1	24 x 48 x 1-1/8	Trim	.65	40	.84	48
White Mat Fabric						
1612-MAT-1	24 x 24 x 1-1/8	Trim	.65	40	.77	24
1610-MAT-1	24 x 48 x 1-1/8	Trim	.65	40	.77	48
White Overtone Fabric & Paint						
1612-OVT-1	24 x 24 x 1-1/8	Trim, Reveal, Narrow Reveal	.65	40	.89	24
1610-OVT-1	24 x 48 x 1-1/8	Trim, Reveal, Narrow Reveal	.65	40	.89	48

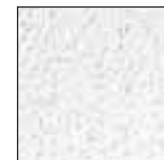
ASTM E 1264 Classification: Type XX, Pattern E (Except White Elite)
Type XX, Pattern E I (White Elite Only)

***Ordering Procedure:** To order preferences for edge details, select the item number above, then add the appropriate Edge Detail Codes below. Example:

Item Number	Edge Detail Codes (Other than Trim)
Select from chart	B Reveal (15/16") F Narrow Reveal (9/16")
Example: 1612-NBY-1	1612 B -NBY-1 1612 F -NBY-1



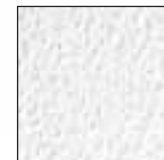
Finishes



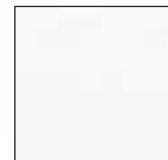
White Nubby – NBY-1



White Overtone® – OVT-1



White Elite – ELTP-1



White Mat – MAT-1



Black Mat – MAT-5



Popular Applications:

- Enclosed Offices • Conference Rooms
- Theaters • Sound Stages • Education

***Checkerboarding:** Using similar aesthetic products in the same room, same offices, same building or same complex to achieve a consistent look while meeting various acoustical performance needs and budgets.

PRODUCT SPECIFICATION DETAILS

ACOUSTICAL CEILING SYSTEMS

09500

PART 2: PRODUCTS

2.1 GENERAL

Provide acoustical ceiling material manufactured to meet requirements of this specification in accordance with ASTM E 1264.

2.2 MATERIALS

Acoustical Ceiling Units:

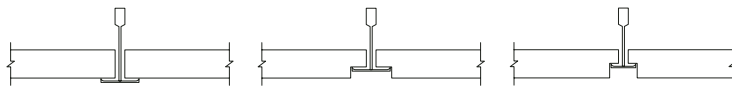
1. Type XX (composite fiberglass/gypsum base)
2. Form NA
3. Pattern [E I] [E]
4. Composite fiberglass/gypsum lay-in panel with fine textured, fabric or vinyl finishes [White Nubby] [White Mat] [Black Mat] [White Elite] [White Overtone®]
5. Size 1-1/8" thick x [24" x 24"] [24" x 48"]
6. Edge Detail [Trim (Square)] [Reveal] [Narrow Reveal]
7. Noise Reduction Coefficient (NRC) .65
8. Ceiling Attenuation Class (CAC) 40
9. Light Reflectance Coefficient (LR) [.05] [.77] [.84] [.85] [.89]
10. Color: [Nubby-White] [Elite-White] [Mat-White] [Mat-Black] [Overtone®-White]
11. Flame Spread Classification Class A
12. Manufacturer, subject to compliance with requirements of this specification, BPB
13. Product Name Capaul® Brand TufCore™

Size Options

24" x 24"

24" x 48"

Edge Detail Options



Trim Edge
(Square) 1/16" Grid

Reveal Edge
1/16" Grid

Narrow Reveal Edge
7/16" Grid

Distributed by:

USA

BPB America Inc.
5301 West Cypress St., Suite 300
Tampa, FL 33607
Toll Free: +1-866-427-2872
Fax: +1-800-829-1422
E-mail: crc@bpb-na.com
Web: www.bpb-na.com

Canada

BPB Canada Inc.
Architectural Products Sales Division
6715 Ogdendale Road SE
Calgary, Alberta T2C 2A4
Toll Free: +1-866-427-2872
Fax: +1-800-829-1422
E-mail: crc@bpb-na.com
Web: www.bpb-na.com

Outside North America

BPB America Inc.
5301 West Cypress St., Suite 300
Tampa, FL 33607
Phone: +1-813-286-3900
Fax: +1-813-286-3908
E-mail: international@bpb-na.com
Web: www.bpb-na.com

Characteristics, properties or performance of materials or systems manufactured by BPB herein described are derived from data obtained under controlled test conditions. BPB makes no warranties, express or implied, as to their characteristics, properties or performance under any variations from such conditions in actual construction. BPB assumes no responsibility for the effects of structural movement.

®™ Trademarks are the property of BPB plc or its affiliates and related companies.

NOTICE: The information in this document is subject to change without notice. BPB assumes no responsibility for any errors that may inadvertently appear in this document.

©2005 BPB America Inc. Printed in U.S.A. Form LCD-3989 Rev. B/10M/0605

