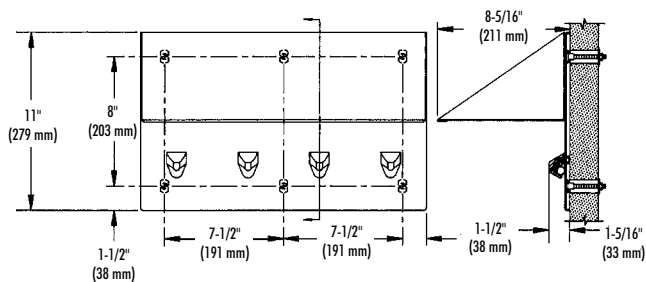
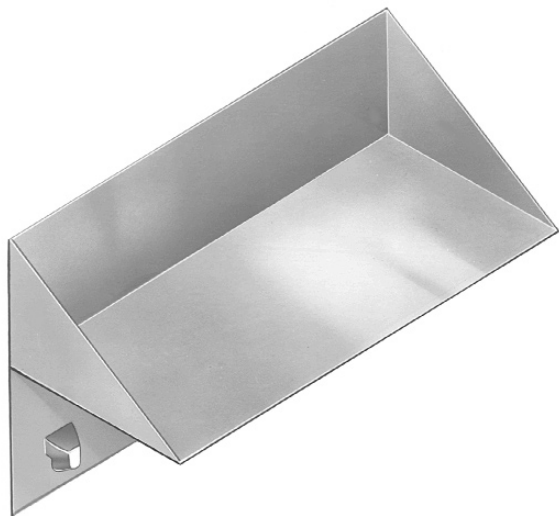


SECURITY BOOKSHELF WITH CLOTHES HOOKS

- Chase Mounted



CONSTRUCTION:

- **BACKPLATE & SHELF:** Fabricated of type 304 (18-8), 14 gauge stainless steel with exposed surfaces in architectural satin finish. All seams are tig welded and ground smooth. Shelf interior is glass blasted to a uniform finish.
- **SAFETY HOOK:** Fabricated of bright, chrome plated brass housing with stainless steel ball and spring. Friction mechanism allows holder to clasp towels, clothing, etc., but releases when excessive force is applied.

INSTALLATION:

Backplate has welded anchor nuts to receive 1/4" - 20 studs, nuts and washers. (Included with unit.) (6) 5/8" dia. holes are required at locations shown.

WALL THICKNESS	
Specify Thickness: _____	
WALL TYPE (must check one)	
<input type="checkbox"/> Concrete	<input type="checkbox"/> Block
<input type="checkbox"/> Steel	<input type="checkbox"/> Other _____

Document No. 9280

This information is subject to change without formal notice.
1299RSSCJ



P.O. Box 309, Menomonee Falls, WI 53052-0309
Phone 1-800-BRADLEY FAX 262-253-4161
Web Site: <http://www.bradleycorp.com>
Technical Information Fax Service: 1-800-BRADFAX