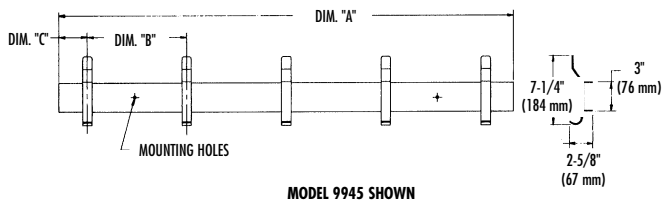
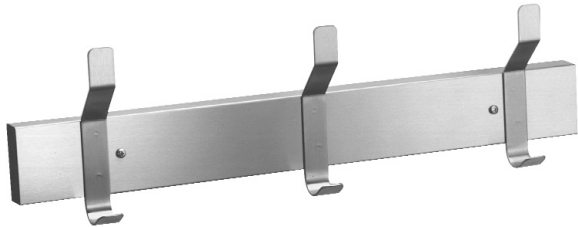


## HAT AND COAT RACK

- Model 9943 – 3 Hooks
- Model 9944 – 4 Hooks
- Model 9945 – 5 Hooks
- Model 9946 – 6 Hooks



Model No.	Dim. "A"	Dim. "B"	Dim. "C"	Hooks
9943	24"	9"	3"	3
9944	36"	10"	3"	4
9945	48"	11"	2"	5
9946	60"	10-3/4"	3-1/4"	6

**MODEL 9943**  
**9944**  
**9945**  
**9946**

### CONSTRUCTION:

- **BACKPLATE** fabricated of type 304 (18-8), 22 gauge stainless steel with exposed surfaces in architectural satin finish.
- **HOOKS** fabricated of type 304 (18-8), 14 gauge stainless steel with exposed surfaces in architectural satin finish.

### INSTALLATION:

Secure to wall with mounting screws (included) at holes provided.

### GUIDE SPECIFICATION:

Surface mounted hat and coat rack shall be fabricated of type 304 (18-8), 22 gauge stainless steel in satin finish. Hooks shall be of 14 gauge stainless steel.

Surface Mounted Hat and Coat Rack shall be Bradley Model 9943 (9944, 9945, 9946).

Document No. 9150

This information is subject to change without formal notice.  
© 2004 Bradley Corporation  
12-22-2004

**Bradley**

P.O. Box 309, Menomonee Falls, WI 53052-0309  
Phone 1-800-BRADLEY FAX 262-253-4161  
Web Site: <http://www.bradleycorp.com>