

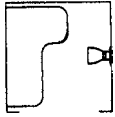
# MODEL 9565 9566



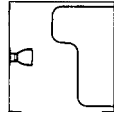
When installed as specified in diagram, unit meets Barrier-Free requirements

## SHOWER SEAT

- Barrier-Free Design
- Accent Series – Color Laminate
- Specify color \_\_\_\_\_  
(See color chart in back of catalog)



□ 9565  
(Left Hand)



□ 9566  
(Right Hand)



### CONSTRUCTION:

- **FRAME** fabricated of 1" dia. type 304 (18-8), 18 gauge stainless steel tubing. Heliarc welded.
- **WALL BRACKET** fabricated of 16 gauge stainless steel with stainless steel piano hinges.
- **RETAINING BRACKET** fabricated of 16 gauge stainless steel. Positive bullet-type catch holds seat securely in position.
- **SEAT** fabricated of 5/16" thick solid plastic laminate, made of colored Melamine bonded under high pressure to a phenolic core. All exposed edges are machined smooth to a uniform dark finish.

### OPERATION:

Hinged seat folds up and out of the way when not in use. When properly installed, seat can support up to 250 lbs. – static load.

### INSTALLATION:

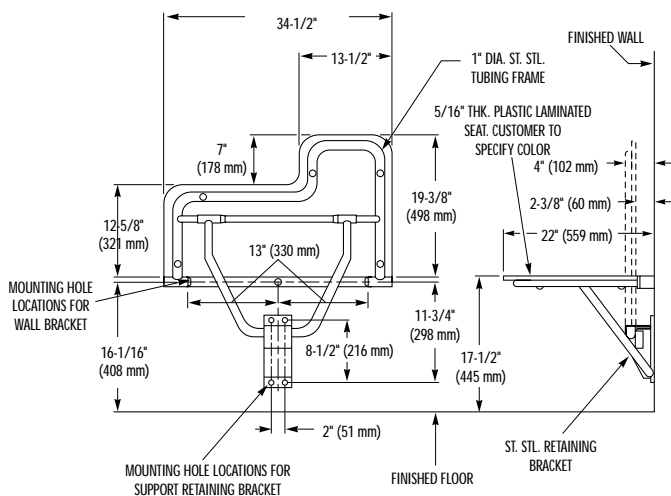
Provide concealed backing or anchors as specified by architect before finished wall is applied. Secure to wall with mounting screws (included) at holes provided. Locate mounting holes 16-1/16" above finished floor. Secure leg support retaining bracket to wall at locations shown.

### GUIDE SPECIFICATION:

Folding plastic laminate shower seat shall be fabricated of 5/16" thick Melamine bonded to a phenolic core secured to a stainless steel frame of 1" diameter, 18 gauge tubing. Support leg locks into 16 gauge retaining bracket with bullet-type catch. Shower seat shall meet or exceed ADA guidelines.

Overall dimensions: 34-1/2"W x 22"D x 1-5/16" thick.

Folding Plastic Laminate Shower Seat shall be Bradley Model 9565 (9566) - \_\_\_\_\_ (Specify Bradley color number).



Document No. 9025

This information is subject to change without formal notice.  
© 2003 Bradley Corporation  
11-7-2003



P.O. Box 309, Menomonee Falls, WI 53052-0309  
Phone 1-800-BRADLEY FAX 262-253-4161  
Web Site: <http://www.bradleycorp.com>  
Technical Information Fax Service: 1-800-BRADFAX