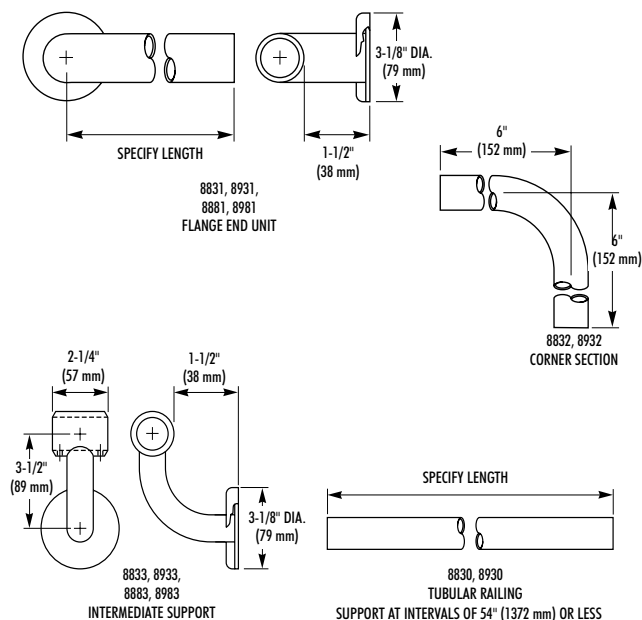
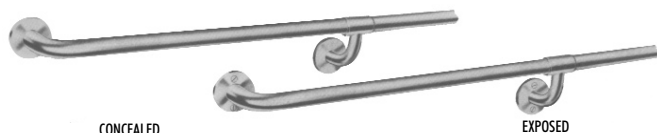


CORRIDOR SAFETY RAILS

- Closed End Rail with Mounting Flanges
- Heavy Duty Stainless Steel
- Model 883 Series – 1-1/2" Concealed
- Model 893 Series – 1-1/4" Concealed
- Model 888 Series – 1-1/2" Exposed
- Model 898 Series – 1-1/4" Exposed



CONSTRUCTION:

- **TUBING** of type 304 stainless steel with exposed surfaces in architectural satin finish. Model 883, 888-1-1/2" O.D. Model 893, 898-1-1/4" O.D.
- **INTERMEDIATE SUPPORT** of type 304 stainless steel with exposed surfaces in architectural satin finish. Railing sleeve and mounting flange heliarc welded to 1" O.D. 18 gauge stainless steel underslung arm. All welds ground and polished to blend. Sleeve of 12 gauge stainless steel equipped with two stainless steel set screws on underside of tubing. Flange of 11 gauge stainless steel, 3-1/8" dia. Flange escutcheon has 5/8" crowned height (Model 883, 893.)

INSTALLATION:

Secure to wall where adequate in-wall backing exists. Use rail as template to locate mounting holes. Drill holes and set anchors as appropriate. Mount rail and secure mounting screws. (For Bradley corridor rail mounting kits, refer to Mounting Kits page at back of Grab Bar section.)

Safety railing and supports shall be Bradley Model _____ Series _____ diameter, type 304 No. 4 satin finish stainless steel with _____ mounting flanges in sizes and configurations as indicated.

GUIDE SPECIFICATION:

The railing shall have _____ O.D. and a minimum 18 gauge wall thickness. Intermediate supports shall incorporate flange, underslung arm and railing sleeve. The 3-1/8" diameter flange shall be 11 gauge stainless steel. Flange shall be heliarc welded to 1" diameter underslung arm which is welded to railing sleeve. Railing sleeve shall encircle railing and have two concealed stainless steel set screws for holding railing in place.

Corridor Safety Rail shall be Bradley Model 883 (893, 888, 898).

WALL RETURN shall consist of Flanges, escutcheons (models 883 and 893) and tubing.

FLANGES fabricated of type 304 (18-8), 3-1/8 dia. 11 gauge stainless steel.

ESCUTCHEONS (models 883 and 893) of type 304 (18-8) 22 gauge stainless steel. One piece drawn construction with exposed surfaces in architectural satin finish. Snap over flanges to conceal mounting screws.

TUBING of type 304 (18-8), 1-1/2" O.D. 18 gauge stainless steel, seamless construction with exposed surfaces in architectural satin finish. Bent ends of tubing pass through the flanges and are heliarc welded into a structural unit for maximum strength.