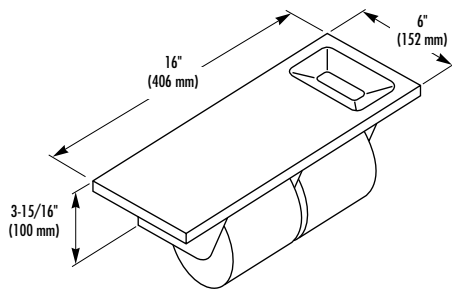
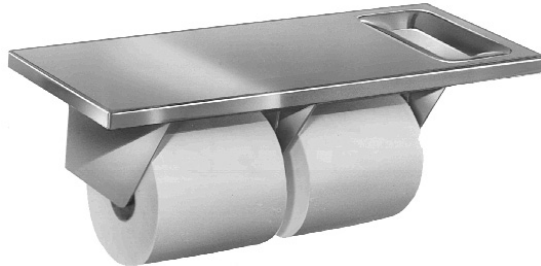


TOILET TISSUE DISPENSER

- Dispenser with Shelf and Ashtray
- Model 5265 – Double Roll



CONSTRUCTION:

- **SHELF** fabricated of type 304 (18-8) 18 gauge stainless steel with exposed surfaces in architectural satin finish. One half inch (1/2") front and side edges. Corners are ground smooth.
- **TISSUE DISPENSER** fabricated of type 304 (18-8) 18 gauge stainless steel with exposed surfaces in architectural satin finish. Unit welded to shelf. Spindle(s) of ABS plastic with concealed spring.
- **ASHTRAY** fabricated of type 304 (18-8) 18 gauge stainless steel with exposed surfaces in architectural satin finish. Unit embossed into shelf.

CAPACITY:

Two standard core toilet tissue roll(s) through 6" in diameter.

OPERATION:

Spindle(s) easily removed for servicing. Ashtray wipes clean.

INSTALLATION:

Secure dispenser with mounting screws (included) at holes provided.

OPTIONAL FEATURES:

Feature	Suffix
<input type="checkbox"/> Anti-theft spindle	-52

GUIDE SPECIFICATION:

Toilet Tissue dispenser with embossed ashtray shall be of type 304 satin finish stainless steel. Tissue dispenser to hold two standard core toilet tissue roll(s).

Overall dimensions: 16"W x 4"H x 6"D.

Toilet Tissue Dispenser with Shelf and Ashtray shall be Bradley Model 5265.

Document No. 8530

This information is subject to change without formal notice.
© 2005 Bradley Corporation
2-15-2005



P.O. Box 309, Menomonee Falls, WI 53052-0309
Phone 1-800-BRADLEY FAX 262-253-4161
Web Site: <http://www.bradleycorp.com>