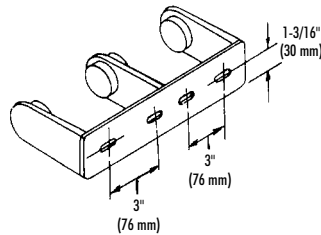
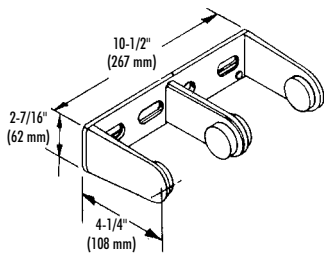
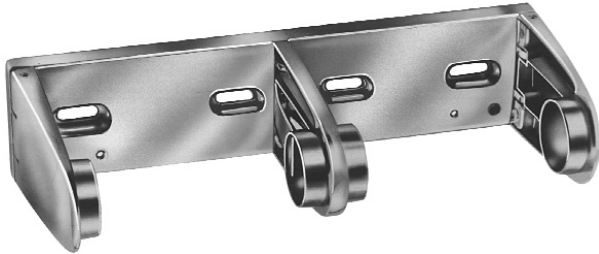


TOILET TISSUE DISPENSER

- Controlled Delivery
- Dual Roll (For Single Roll See Model 505)

Bradex™



CONSTRUCTION:

- UNIT fabricated of die cast zinc. Copper and nickel polished chrome plated finish.

CAPACITY:

Two standard core toilet tissue rolls through 5" in diameter. Note: Due to variations in paper sizes, we recommend verifying paper compatibility with an actual sample of this unit.

OPERATION:

Push button unlocks support arms to permit servicing of unit. Tension spring on stationary arm controls paper delivery.

INSTALLATION:

Secure to wall with mounting screws (included) at holes provided.

GUIDE SPECIFICATION:

Surface mounted toilet tissue dispenser shall be chrome plated die cast zinc and hold two standard core toilet tissue rolls.

Tension spring controls paper delivery.

Overall dimensions: 10-1/2"W x 2-7/16"H x 4-1/4"D.

Surface Mounted Toilet Tissue Dispenser shall be Bradley Model 522.

Document No. 8500

This information is subject to change without formal notice.
1299RSSCJ

Orders composed of products indicated as **Bradex™** will be available to ship in one week after receipt of order at the factory. There is no pricing penalty for this service from Bradley.

Bradley 

P.O. Box 309, Menomonee Falls, WI 53052-0309
Phone 1-800-BRADLEY FAX 262-253-4161
Web Site: <http://www.bradleycorp.com>
Technical Information Fax Service: 1-800-BRADFAX