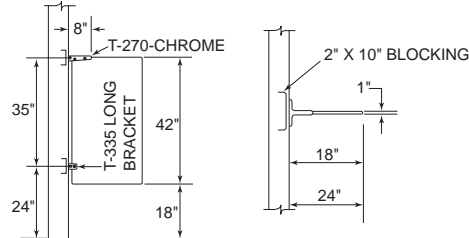


Privacy & Urinal Screens

Plastic Laminate & Solid Phenolic Core

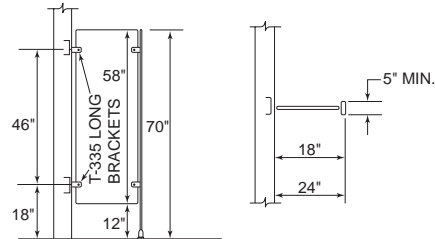
Privacy and Urinal Screen Styles

Model #2 - Wall hung with wing bracket



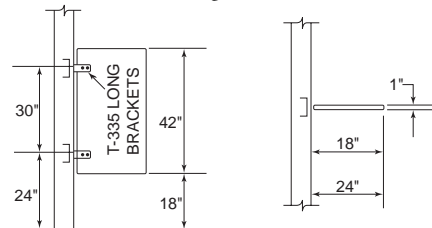
Generally recommended for Urinal Screen application. Screen is mounted to wall with Mills chrome plated wing bracket.

Model #3 - Floor mounted



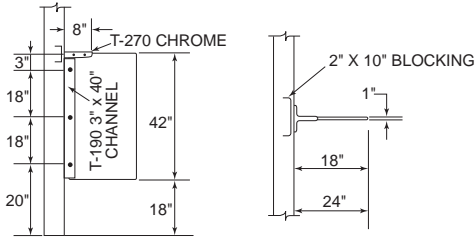
Generally recommended for Privacy Screen application. Screen has floor mounting and requires minimum 3" concrete floor for anchoring. This model can also be modified to become a floor-to-ceiling mounted by changing the mounting pilaster.

Model #4 - Wall hung with T-335L Brackets



Generally used for Urinal Screen application where the use of the Mills wing bracket is not desired.

Model #5 - Government flanged with Wing Bracket



Generally used where specifications require the Urinal Screen to have a continuous bracket in addition to the Mills wing bracket.

Construction

Panels

Plastic Laminate screens shall be 1" thick constructed of a sandwich of 0.48 high pressure decorative laminate bonded under pressure with a non-toxic adhesive to a solid 45 lb. density industrial grade particle board core. Screen edges shall be laminated first.

Solid Phenolic Core screens shall be 1/2" thick constructed of solid phenolic core with a high pressure decorative matte surface finish as an integral part for the core material. Edges shall be black machined and finished smooth with a 15 degree edge.

Hardware

Screens shall be provided with all hardware and fastenings to provide a complete installation.

Urinal Screens

Screens may be wall hung and attached to the wall with two chromed or two cast stainless steel brackets; floor mounted, which provides a 5" width front attached with four brackets, two at the wall and two at the front, and GSA, which attach to walls with an 8" top mounted 11 gauge steel chromed plated wing bracket (for plastic laminate screens only) and continuous full height "U" bracket.

The Mills Company reserves the right to make changes in design, material, and documentation without formal notice and without incurring obligation.

Verify all rough-in dimensions prior to installation.

Consult local and national codes: conformity and compliance to local and national codes is the responsibility of the installer.

1098RSSJP

Mills

A subsidiary of **Bradley**
P.O. Box 309, Menomonee Falls, WI 53052-0309
Phone 1-800-BRADLEY FAX 262-253-4161
Web Site: <http://www.bradleycorp.com>
Technical Information Fax Service: 1-800-BRADFAX

Specifications

Part 1 – General

1.1 Section Includes (edit to suit project requirements):

- A. Plastic Laminate and Solid Phenolic Core, consisting of:
 - 1. Privacy and Urinal screens
- B. Hardware and structural accessories

1.2 Related Sections

- A. Section 10800 – Toilet and Bath Accessories
- B. Section _____ – Structural-support and drilling for ceiling hung compartments.

1.3 Submittals

- A. Submit under provisions of Section 01300
- B. Product Data: Manufacturer's catalog cuts of typical screen, hardware and fastenings.
- C. Shop Drawings: Show layout of toilet compartments.
- D. Selection Samples: Manufacturer's range of standard colors for Plastic Laminate and Solid Phenolic Core.
- E. Verification Samples: Sample of specified laminate on actual chip for color and texture verification.

1.4 Quality Assurance

- A. Obtain all components of toilet compartments from one single source manufacturer who certifies that materials meet or exceed specifications.
- B. Installer Qualifications: Installer shall have a history of completed jobs of similar size and scope, and shall be qualified.

1.5 Delivery, Storage and Handling

- A. Deliver pre-finished materials to the project site in original, unopened cartons or other packaging materials necessary to protect structure and finishes.
 - 1. Label packages clearly with manufacturer's name and item description.
 - 2. Store materials in such packaging until installation.
 - 3. Store privacy and urinal screens' components in a vertical position with adequate support to ensure flatness and to prevent damage to pre-finished surfaces.

1.6 Environmental Requirements

- A. Do not deliver materials or begin work until building is enclosed with complete protection from outside weather and temperature within building is being maintained at a minimum of 60 degrees Fahrenheit.

1.7 Warranty

- A. Provide manufacturer's 3 year warranty against discoloration and delamination of panels.
- B. Provide manufacturer's 5 year warranty for all chromed alloy hardware and lifetime warranty for all stainless steel hardware.

Part 2 – Products

2.1 Manufacturer

- A. Provide products as manufactured by The Mills Company, Willoughby, Ohio.
 - 1. Series 2- Wall Hung
 - 2. Series 3- Floor Supported
 - 3. Series 4- Flanged

2.2 Components

A. Screens

- 1. Plastic Laminate screens shall be 1" thick constructed of a sandwich of 0.48 high pressure decorative plastic laminate meeting or exceeding NEMA standards bonded under pressure with a non toxic adhesive to a solid 45 lb. density industrial grade particle board core. Screen edges shall be laminated first and surface laminated last to achieve maximum protection from moisture penetration. Screen thickness: Minimum 1" unless otherwise indicated.
- 2. Solid Phenolic Core screens shall be 1/2" thick constructed of solid phenolic core with high pressure decorative matte surface finish as an integral part of the core material. Edges shall be black machined and finished smooth with a 15 degree edge.

- B. Series 500 (Floor Braced) pilaster shall be the same construction as screens but shall not be less than 1-1/4" thick for Plastic Laminate and not less than 3/4" for Solid Phenolic Core, and will provide support for Series 3 screens.

- 1. Pilasters will be anchored to the floor using 3/8" threaded rods, hex nuts and washers to provide floor adjustment.
- 2. Floor Fastenings: Concealed by a 4" high four-piece shoe of type 304 bright annealed stainless steel.

C. Fittings:

- 1. Brackets: Non ferrous heavy duty chrome plated or cast stainless steel with brushed finish.
- 2. Fasteners for hinges, slide latch and keeper: chrome plated or stainless steel theft proof.

Part 3 – Execution

3.1 Examination

- A. Before installation, examine the site to insure that no defects or conditions exist which would result in an unsatisfactory installation of the compartments.
- B. Take field measurements at this time to ensure correct installation.

3.2 Installation

- A. Install compartments in accordance with shop drawings and manufacturer's current installation instructions.
- B. Install panel or locate outswinging doors to prevent their opening more than 105 degrees.
- C. Leave compartments complete, clean and free from defects in workmanship.
- D. Thoroughly adjust and lubricate doors and hardware for proper working condition. Set doors in open or close condition as indicated on drawings.

3.3 Cleaning

- A. Remove all rubbish generated by installer and leave the area broom clean.