

# Restroom Partitions – Overview

## Styles

### Sentinel™ Overhead Braced – Series 400

This style provides the most economical solution for heavy traffic and vandalism-prone areas. Because it requires no special floor or ceiling construction, installation is easy in new or old buildings. The anti-grip rail provides outstanding rigidity.



### Floor Braced – Series 500

This style complements design with functional performance. Recommended for buildings with high ceilings, it enhances the effect of spaciousness. A minimum 3" concrete construction for anchoring is required.



### Ceiling Hung – Series 600

This style is ideal for areas with low ceilings. Offering an area free from obstruction to allow for fast and easy maintenance, the system requires structural supports in the ceiling for maximum rigidity. Not recommended for ceiling heights over 8 feet.



### Floor-to-Ceiling – Series 700

This style is mounted to the floor and ceiling and is recommended where additional stability is desired.

## Materials

### Baked Enamel

Constructed of 22 gauge galvanized sheet metal, cleaned, primed and finished with high-grade synthetic enamel, and oven baked to provide a mar-resistant finish. Patented Permaseal™ seamless design features unitized construction, which provides superior panel integrity against water penetration to stop panels rusting from the inside.

### Stainless Steel

Constructed of 20 gauge stainless steel #304. Patented Permaseal™ seamless design features unitized construction, which provides superior panel integrity against water penetration to stop panels rusting from the inside.

### Plastic Laminate

Constructed of a sandwich of high pressure decorative plastic laminate bonded to a solid industrial-grade particle board core.

### Solid Core Phenolic

Constructed of solid phenolic core with a high-pressure decorative matte surface finish as an integral part of the core material.

### Bradmar Solid Plastic

Constructed from an advanced formula of 1" thick high density polyethylene (HDPE). Available in 8 popular colors.

The Mills Company reserves the right to make changes in design, material, and documentation without formal notice and without incurring obligation.

Verify all rough-in dimensions prior to installation.

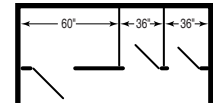
Consult local and national codes: conformity and compliance to local and national codes is the responsibility of the installer.

7-8-2004

## Types of layouts

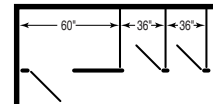
### Between Wall

Refers to a compartment or compartments located between two walls. Shown as BW3 with one (1) 60" compartment and two (2) standard 36" compartments.



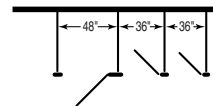
### Open End (In Corner)

Refers to compartment or compartments that will be affixed laterally to only one wall. Shown as OE3 with one (1) 60" compartment and two (2) standard 36" compartments.



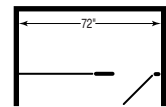
### Free Standing

Refers to layouts where the compartments will be located without being affixed to lateral walls. Shown as FS3 with one (1) 48" compartment and two (2) standard 36" compartments.



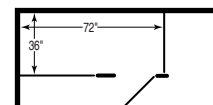
### Alcove

Refers to the specific layout where the single compartment will be attached to either two walls or one wall and the end of a run of compartments. Shown as AL72".



### In-Corner Alcove

Refers to the specific layout where the single alcove compartment will be in a corner and require an end panel. Shown as an AL72" with an additional 36" panel.



## Budget Pricing

The following charts illustrate the relative pricing of various types of partitions.

Material	Relative Price
Baked Enamel	Least Expensive Alternative
Plastic Laminate	1.3 x Baked Enamel Cost
Phenolic	2.4 x Baked Enamel Cost
Solid Plastic (HDPE)	2.5 x Baked Enamel Cost
Stainless Steel	2.9 x Baked Enamel Cost

Series	Relative Price
400	Economy
500	Mid-Range
600	Premium
700	Premium - Plus

**Mills**

A subsidiary of **Bradley**

P.O. Box 309, Menomonee Falls, WI 53052-0309

Phone 1-800-BRADLEY FAX 262-253-4161

Web Site: <http://www.bradleycorp.com>